

BECONTREE TAKES OVER: A RIBA LATE



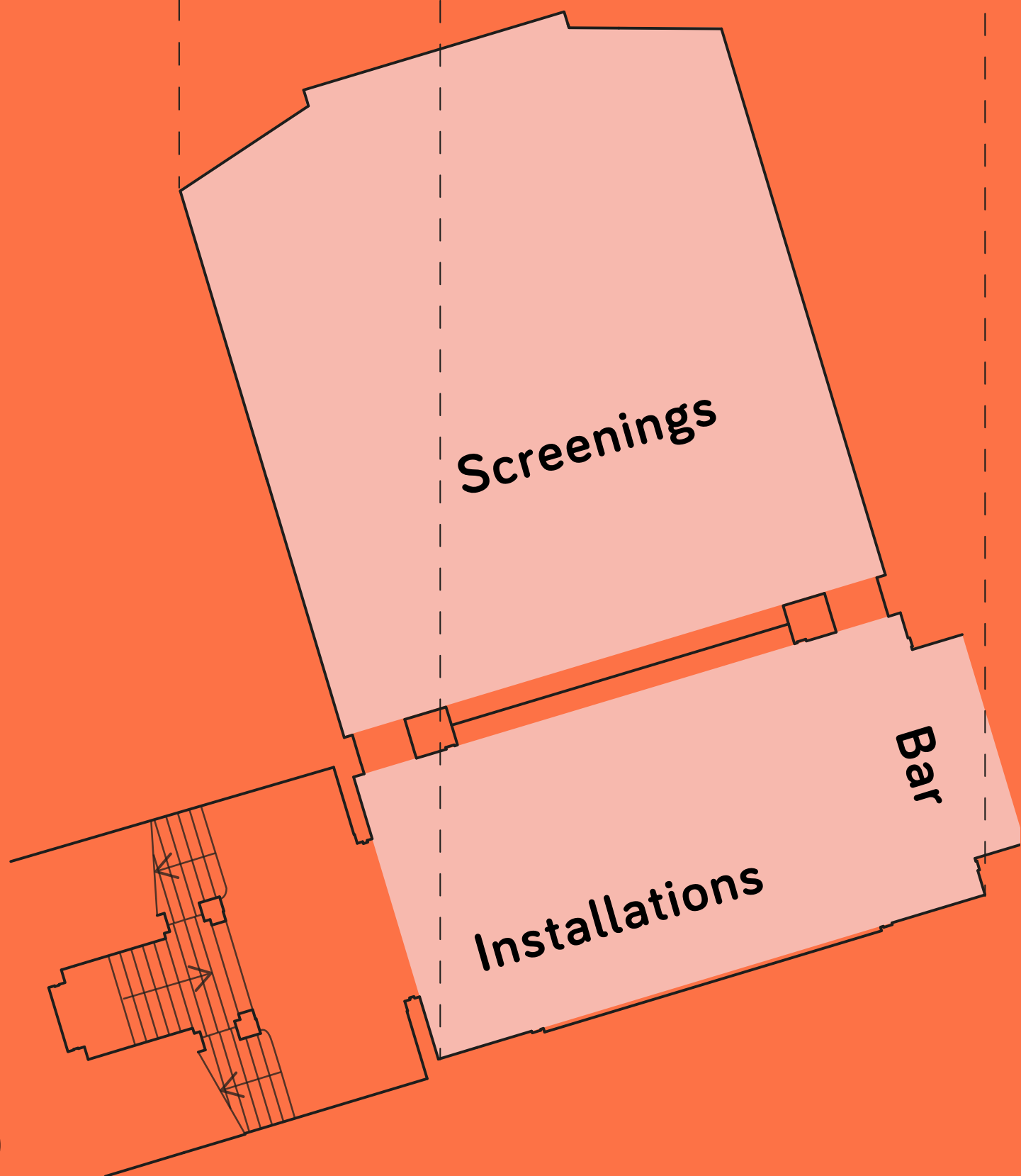
**WED 01 DECEMBER
5.30 - 9.30PM**

Welcome back to our building after hours as we mark the centenary of the Becontree Estate in Barking & Dagenham with a night of talks, tours, music and dance.

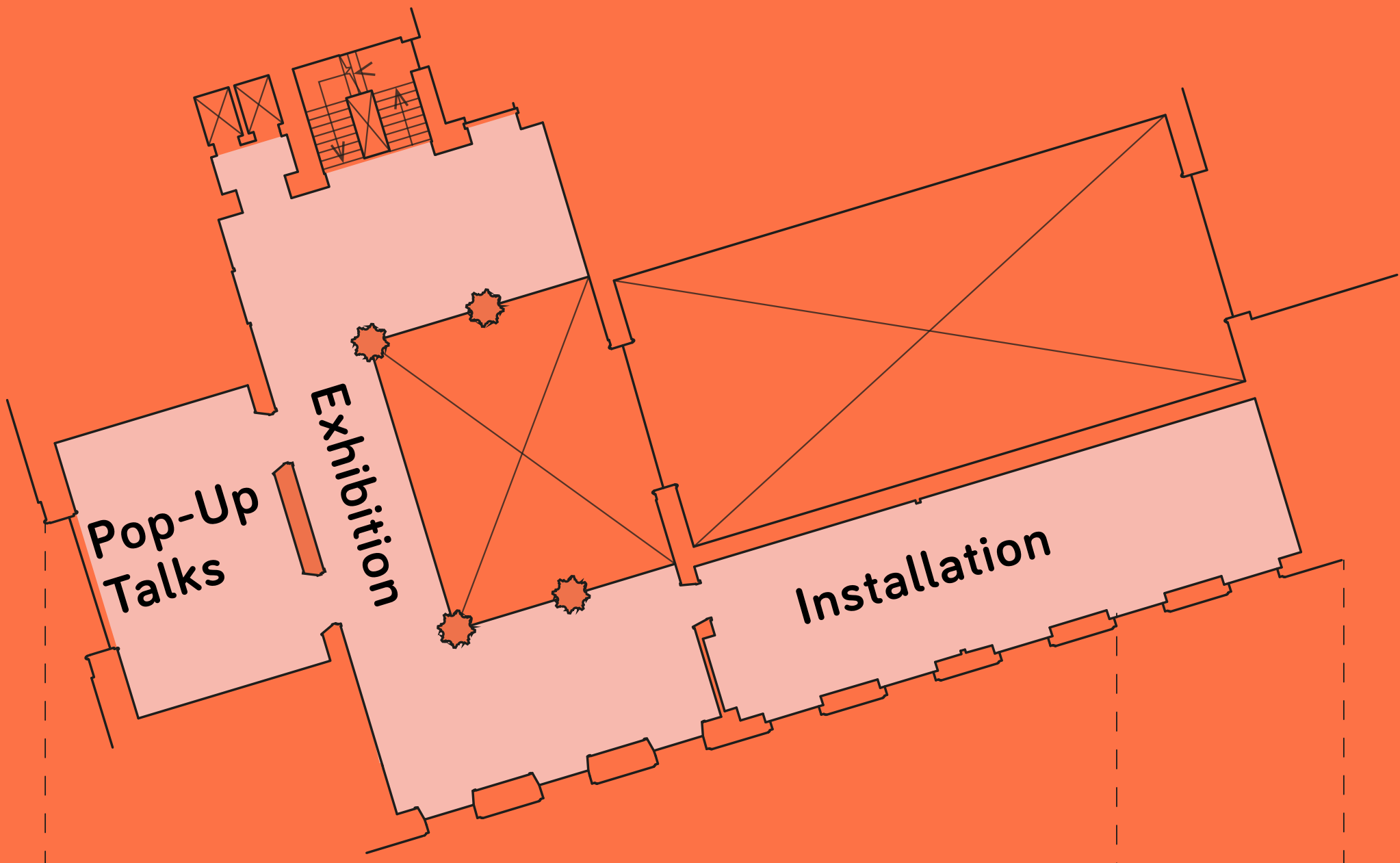
#ribabecontreecentenary



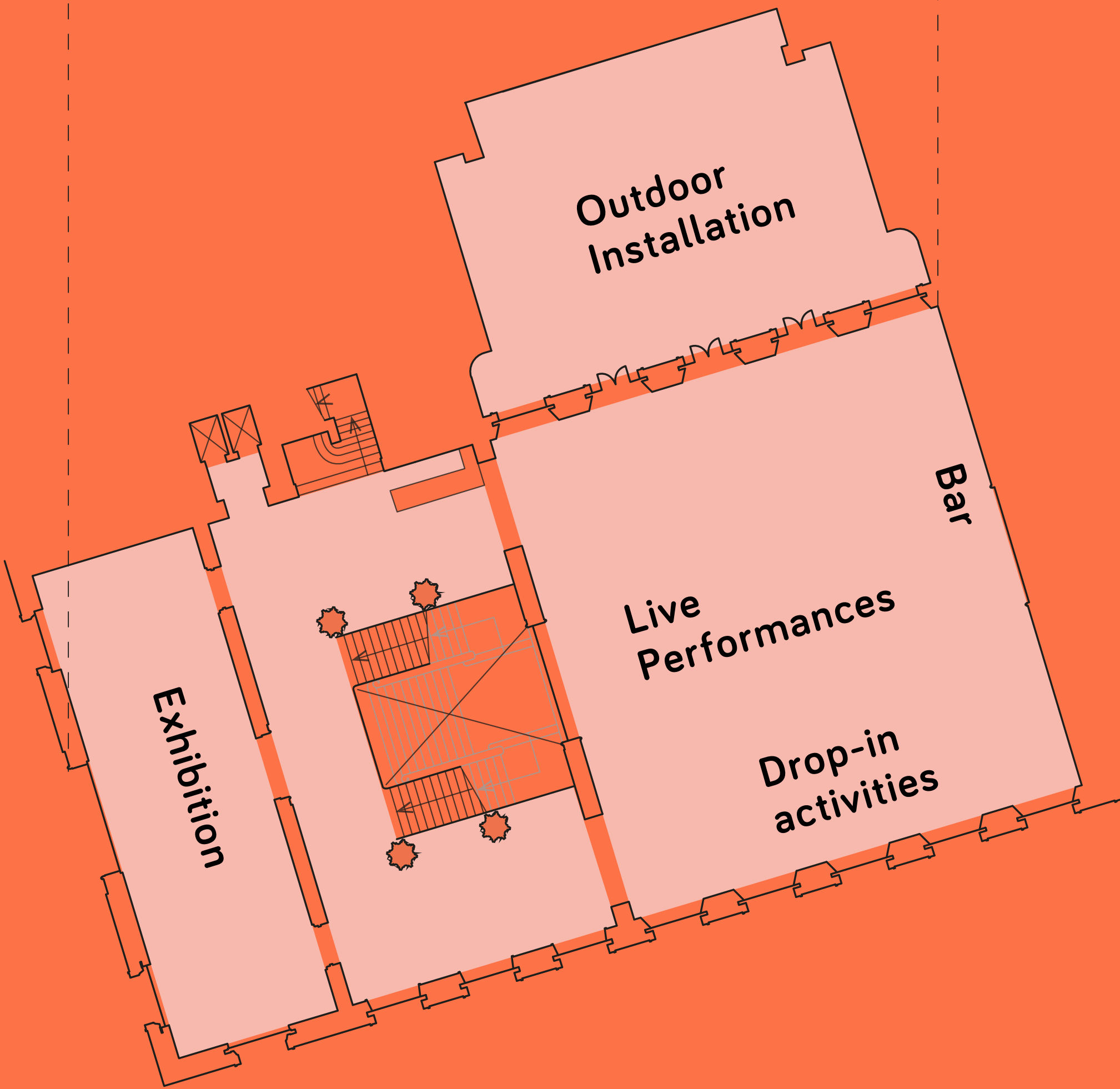
GROUND FLOOR



LOWER GROUND FLOOR



SECOND FLOOR



FIRST FLOOR



LOWER GROUND FLOOR:

FILM SCREENINGS

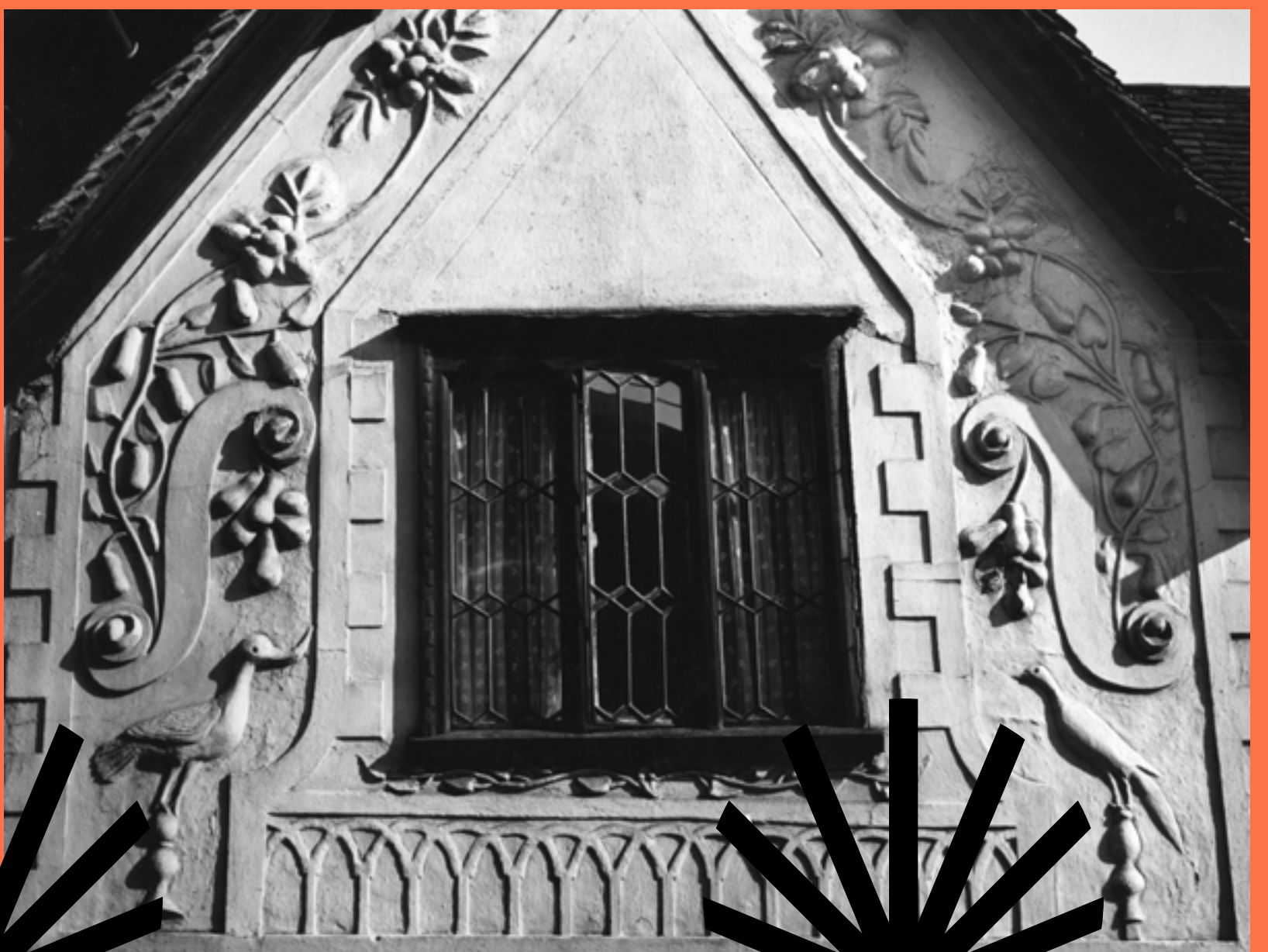
A short selection of films that give an insight into life on the Becontree estate now and over the past 100 years

RIBA COLLECTIONS: ESSEX

Shining a light on the traditional buildings of Essex

FROM PUBLIC TO PERSONAL: BECONTREE AT 100

Catch up with the latest story as part of our online partnership with Google Arts and Culture



#ribabecontreecentenary



GROUND FLOOR:



LIVED IN ARCHITECTURE

Our exhibition with visual artist Verity-Jane Keefe is open all night, plus drop-in guided tours

THE WHITE HOUSE POETRY CIRCLE

Listen to five new poems specially commissioned for this evening

RIBA BOOKSHOP

Browse a special selection of books themed around our exhibitions alongside our regular extensive range of titles

[#ribabecontreecentenary](#)

FIRST FLOOR:

THE TREE OF A MAN NAMED BEOHHA

A new photography series by Kalpesh Lathigra is on show all night, plus drop-in guided tours

LIVE DANCE

Two performances by Barking & Dagenham Youth Dance at 6.30pm & 8pm

LIVE DJ SET

Catch DJ-SK from Future Youth Zone at 7pm

DROP-IN ACTIVITIES

Take a seat and get creative with our informal workshops

TERRACE

Installation by POoR Collective and Mayesbrook Park School



SECOND FLOOR:



POP-UP TALKS

Head upstairs to catch short talks by East End Women's Museum, photographers Kalpesh Lathigra and David Bennett, and nimtim architects

COATED IN TRAILS OF WISTERIA

Installation by photography students at Barking & Dagenham College

CORNER PLOTS COMMISSION DISPLAY

An exhibit bringing together shortlisted proposals to re-work a number of green sites across Becontree

[#ribabecontreecentenary](#)