

## 2021 Global Architecture Exchanges: People, Planet, Profession

### Topic 4 – The impacts of COVID-19 on the way we practise architecture

Technology is a tool which has enabled us to change how we practise architecture. Now is the opportunity to use the same tool to address social inequalities and encourage more diversity in the workplace (gender equality, social background, inclusivity).

How solutions currently being implemented in response to COVID-19 can reinforce, and potentially worsen some of the challenges that discourage a more diverse profession?

How COVID-19 demonstrates that the profession is resilient and open to change?

Session 1 – Includes speakers from the UK, Ireland, Netherlands, China, South Korea, New Zealand

Wednesday 17 November; 7am GMT

*Participating Institutes and Speakers*

#### The Royal Institute of the Architects of Ireland

**Fiona Hughes, Anne Henry, David Healy; Grafton Architects; Ireland**

**Yvonne Farrell and Shelley McNamara** co-founded **Grafton Architects** in 1978, having graduated from University College Dublin in 1974. They are Fellows of the RIAI, International Honorary Fellows of the RIBA, members of Aosdána, Professors at the Academia in Mendrisio, Switzerland.

In 2018, they were the Curators of the Venice Architecture Biennale with their manifesto: *Freespace*.

Shelley McNamara and Yvonne Farrell received the 2020 Pritzker Prize.

Senior Directors Gerard Carty and Philippe O'Sullivan have been with the practice since 1992. They are accomplished teachers and architects and play a central role in the life of the practice.

In 2021, Simona Castelli, Kieran O'Brien and Matt McCullagh became Directors of the practice.

The practice Associate Directors are: Anne Henry, James Rossa O'Hare, Donal O'Herlihy, David Healy, Joanne Lyons, Ivan O'Connell, Fiona Hughes and Stephen Connolly.

Grafton Architects' numerous awards include: the inaugural RIBA International Prize for the Universidad de Ingeniería y Tecnología (UTEC) in Lima, Peru in 2016; the RIAI Gold Medal for Bocconi University, Milan; the RIBA Royal Gold Medal in 2020; L'Équerre d'argent prize for best building in France with Vigneau Zilio Architectes for Toulouse School of Economics; Kingston University London – Town House won the RIBA 2021 Stirling Prize.

Current projects include: The Marshall Institute, Lincoln's Inn Fields, for the London School of Economics; City Library Parnell Square Dublin with Shaffrey Architects; Headquarters for Electricity Supply Board (ESB) with OMP architects in Dublin; all won by international competition.

#### **Gerard Carty, B Arch Sc (hons) Dip Arch Sc (Hons) FRIAI**

Director, Ger Carty is Fellow of the RIAI, and has been with the practice for over 25 years, contributing to the ideas, ethos and management of the practice during this period. He qualified in 1987 with a diploma from DIT Dublin, and a degree from University of Dublin, Trinity College.

Ger is involved with many of the projects in the office and is Project Director for the London School of Economics, Marshall Building, currently nearing completion and was also the Project Director for Kingston University Townhouse, recently awarded the Stirling Prize 2021.

He currently teaches part time as a Senior Lecturer at SAUL, the School of Architecture, University of Limerick.

**Speakers:**

**David Healy; Associate Director, Grafton Architects; Ireland**

David Healy is Associate Director at Grafton Architects, having been with the practice since 2011 and in the years 2005/6.

Previous experience includes working with Heneghan Peng architects in 2009/10 and working as a Studio Tutor and Occasional Lecturer at UCD School of Architecture 2010-2016.

David is a graduate of UCD School of Architecture as well as studying at Aarhus Arkitektskolen in Denmark.



David Healy

**Anne Henry; Associate Director Grafton Architects; Ireland**

Anne has been part of the team in Grafton Architects since 2014, working on the Institut Mines Telecom IMT in Paris Saclay, the redevelopment of ESB Head Offices Fitzwilliam Street, Dublin and most recently The Marshall Building for London School of Economics in Lincoln's Inn Fields London.

Previous experience includes working with Donaghy Dimond Architects and Scott Tallon Walker Architects in Dublin.

A graduate of UCD School of Architecture, Anne worked in London and Paris as an undergraduate and then in New York following graduation with Tsao and McKown Architects. In 2014 she completed a Diploma in Building Information Modelling (BIM) Technologies (Dublin Institute of Technology) and PassivHaus Designer accreditation.



Anne Henry

**Fiona Hughes; Associate Director Grafton Architects; Ireland**

Fiona Hughes is Associate Director at Grafton Architects and is Assistant Professor in the School of Architecture, Planning and Environmental Policy at UCD.

After graduating from UCD in 2004, Fiona has worked in private practice with Ailtireacht, Simon Walker Architects, GCA, ODOS and Grafton Architects and has worked on numerous national & international award-winning projects & competitions.

At UCD, Fiona has contributed to and led studio / lecture courses, introducing innovative teaching approaches and emphasising linkages to practice. Fiona has been an invited lecturer to architecture schools in Ireland.



Fiona Hughes

**Project: Pandemic & Practice: On Site at The Marshall Building, LSE, Lincoln's Inn Fields**

## New Zealand Institute of Architects

### Rachael Rush; Managing Director, Klein; New Zealand

Rachael has led Klein to the pinnacle of health system design. Her vast experience continues to deliver the most high-profile health building projects in New Zealand.

Rachael has been with Klein since 1999, and as Director of Health has led a decade of growth and excellence. An undeniable people-person, Rachael has been Managing Director since 2010 employing her leadership skills to coordinate diverse groups of specialists, and establish long-term connections with many leading health sector clients.

Her exceptional ability to provide clarity to complex services and facilities allows her to deliver state-of-the-art, functional solutions. Recent award-winning projects include Burwood Hospital Redevelopment, Middlemore Hospital Clinical Services Building and North Shore Hospital Lakeview. The groundbreaking Tiaho Mai Acute Adult Mental Health Unit has set a new benchmark for mental health facilities in New Zealand. Tiaho Mai has been decorated with awards including; 2021 NZIA Auckland Architecture Awards Winner (Public Architecture category) and 2021 NZ Commercial Project Awards (Gold Award and National Category Winner); a true testament to her innovation and passion.

Busy though she is, Rachael's commitment to design excellence extends to a founding membership role on the NZ Health Design Council, and her outstanding leadership is recognised by winning Professional Woman of the Year at the 2017 National Association of Women in Construction Awards.



Rachael Rush

**Theme: Tiaho Mai – a new model for mental healthcare in New Zealand**

## Korean Institute of Architects

### Heechan Park; Director, Studio Heech; Seoul South Korea

Heechan Park received his Masters, Graduate Diploma and Post graduate professional studies at the Bartlett school of architecture, UCL, where he was recipient of the Bartlett Travel Scholarship to travel to Finland and study the work of Alvar Aalto in 2010.

After graduating from the Bartlett, he went to work for Hopkins Architects His works were exhibited at the Royal Academy, London.

He established Studio Heech in Seoul in 2017. Studio Heech won the 2020 Korean Institute of Architects (KIA) award, South Korea's best new buildings of the year.



Heechan Park

**Theme: Experimentation for post-pandemic public space**

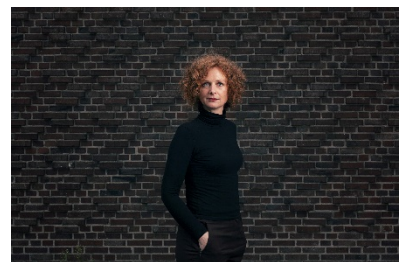
## Royal Institute of Dutch Architects

### Marjolein van Eig; Netherlands

In 2014, Marjolein van Eig founded BureauVanEig, which received various prizes and nominations for her realized work in a short period of time.

The office is known for projects that are nuanced and fit into the environment, while at the same time surprising and excelling in form, use of materials and detailing.

Since 2013, Van Eig has been writing about architecture for various media. Van Eig regularly participates in architecture juries and is a guest lecturer at the Rotterdam Academy of Architecture and TU Delft.



Marjolein van Eig

**Theme:**

## The Architectural Society of China

**TANG Wen Sheng; Deputy Chief architect of Central South Architectural Design Institute Co., Ltd. (CSADI); Senior Member of ASC; AIA Member; China**

As the Deputy Chief Architect of Central South Architectural Design Institute Co., Ltd., Tang Wensheng has been actively engaged in architectural practice and research.

He has contributed to projects of all scales, including Xiamen North Railway Station, Hohhot Bus Passenger East Hub Station, China-Aid Central Africa National Culture and Art Center in Democratic Republic of the Congo.

He is also dedicated to research on design of transportation architecture and transportation hub; type-selection design and creation method of large-span architecture form and structure; and culture, education, sports and green building. He was the recipient of the Architecture Creation Awards of ASC Architectural Design Award on the 60th anniversary of the founding of the People's Republic of China.



TANG Wen Sheng

**Theme: Flexibility and Resilience of Urban Public Space in the Post-epidemic Era**

## Royal Institute of British Architects

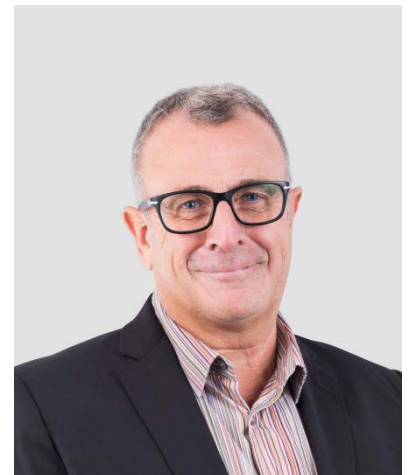
**Neil MacOmish; Board Director, Scott Brownrigg; UK**

Neil MacOmish sits on the Strategic Board at Scott Brownrigg and leads the practice's Cardiff office.

Having graduated from The Welsh School of Architecture (WSA) at Cardiff University, Neil continued his research education at The Bartlett School of Architecture, University College London in Space Syntax Theory. He is currently completing his doctorate in The City and Memory.

Neil works across all sectors, delivering design excellence grounded in sound commercial judgement. He believes that creative and innovative solutions are generated by working closely with clients and working collectively on their aspirations, and that a critical analysis of place and the specific context will result in the most appropriate and best architectural design.

Neil has been appointed to the UN WTO Scientific Committee for sustainable tourism, advising on this year's global conference on sports tourism in Barcelona. He is the only appointed architect.



Neil MacOmish

**Theme: International Working – the merits of the Remote Studio**

## 2021 Global Architecture Exchanges: People, Planet, Profession

### Topic 4 – The impacts of COVID-19 on the way we practise architecture

Technology is a tool which has enabled us to change how we practise architecture. Now is the opportunity to use the same tool to address social inequalities and encourage more diversity in the workplace (gender equality, social background, inclusivity).

How solutions currently being implemented in response to COVID-19 can reinforce, and potentially worsen some of the challenges that discourage a more diverse profession?

How COVID-19 demonstrates that the profession is resilient and open to change?

Session 2 – Includes speakers from the UK, Ireland, Netherlands, Brazil

Thursday 18 November 2021; 16:00 GMT

*Participating Institutes and Speakers*

#### The Royal Institute of the Architects of Ireland

**Fiona Hughes, Anne Henry, David Healy; Grafton Architects; Ireland**

**Yvonne Farrell** and **Shelley McNamara** co-founded **Grafton Architects** in 1978, having graduated from University College Dublin in 1974. They are Fellows of the RIAI, International Honorary Fellows of the RIBA, members of Aosdána, Professors at the Academia in Mendrisio, Switzerland.

In 2018, they were the Curators of the Venice Architecture Biennale with their manifesto: *Freespace*.

Shelley McNamara and Yvonne Farrell received the 2020 Pritzker Prize.

Senior Directors Gerard Carty and Philippe O'Sullivan have been with the practice since 1992. They are accomplished teachers and architects and play a central role in the life of the practice.

In 2021, Simona Castelli, Kieran O'Brien and Matt McCullagh became Directors of the practice.

The practice Associate Directors are: Anne Henry, James Rossa O'Hare, Donal O'Herlihy, David Healy, Joanne Lyons, Ivan O'Connell, Fiona Hughes and Stephen Connolly.

Grafton Architects' numerous awards include: the inaugural RIBA International Prize for the Universidad de Ingeniería y Tecnología (UTEC) in Lima, Peru in 2016; the RIAI Gold Medal for Bocconi University, Milan; the RIBA Royal Gold Medal in 2020; L'Équerre d'argent prize for best building in France with Vigneau Zilio Architectes for Toulouse School of Economics; Kingston University London – Town House won the RIBA 2021 Stirling Prize.

Current projects include: The Marshall Institute, Lincoln's Inn Fields, for the London School of Economics; City Library Parnell Square Dublin with Shaffrey Architects; Headquarters for Electricity Supply Board (ESB) with OMP architects in Dublin; all won by international competition.

#### **Gerard Carty, B Arch Sc (hons) Dip Arch Sc (Hons) FRIAI**

Director, Ger Carty is Fellow of the RIAI, and has been with the practice for over 25 years, contributing to the ideas, ethos and management of the practice during this period. He qualified in 1987 with a diploma from DIT Dublin, and a degree from University of Dublin, Trinity College.

Ger is involved with many of the projects in the office and is Project Director for the London School of Economics, Marshall Building, currently nearing completion and was also the Project Director for Kingston University Townhouse, recently awarded the Stirling Prize 2021.

He currently teaches part time as a Senior Lecturer at SAUL, the School of Architecture, University of Limerick.

**Speakers:**

**David Healy; Associate Director, Grafton Architects; Ireland**

David Healy is Associate Director at Grafton Architects, having been with the practice since 2011 and in the years 2005/6.

Previous experience includes working with Heneghan Peng architects in 2009/10 and working as a Studio Tutor and Occasional Lecturer at UCD School of Architecture 2010-2016.

David is a graduate of UCD School of Architecture as well as studying at Aarhus Arkitektskolen in Denmark.



David Healy

**Anne Henry; Associate Director Grafton Architects; Ireland**

Anne has been part of the team in Grafton Architects since 2014, working on the Institut Mines Telecom IMT in Paris Saclay, the redevelopment of ESB Head Offices Fitzwilliam Street, Dublin and most recently The Marshall Building for London School of Economics in Lincoln's Inn Fields London.

Previous experience includes working with Donaghy Dimond Architects and Scott Tallon Walker Architects in Dublin.

A graduate of UCD School of Architecture, Anne worked in London and Paris as an undergraduate and then in New York following graduation with Tsao and McKown Architects. In 2014 she completed a Diploma in Building Information Modelling (BIM) Technologies (Dublin Institute of Technology) and PassivHaus Designer accreditation.



Anne Henry

**Fiona Hughes; Associate Director Grafton Architects; Ireland**

Fiona Hughes is Associate Director at Grafton Architects and is Assistant Professor in the School of Architecture, Planning and Environmental Policy at UCD.

After graduating from UCD in 2004, Fiona has worked in private practice with Ailtireacht, Simon Walker Architects, GCA, ODOS and Grafton Architects and has worked on numerous national & international award-winning projects & competitions.

At UCD, Fiona has contributed to and led studio / lecture courses, introducing innovative teaching approaches and emphasising linkages to practice. Fiona has been an invited lecturer to architecture schools in Ireland.



Fiona Hughes

**Project: Pandemic & Practice: On Site at The Marshall Building, LSE, Lincoln's Inn Fields**

## Royal Institute of British Architects

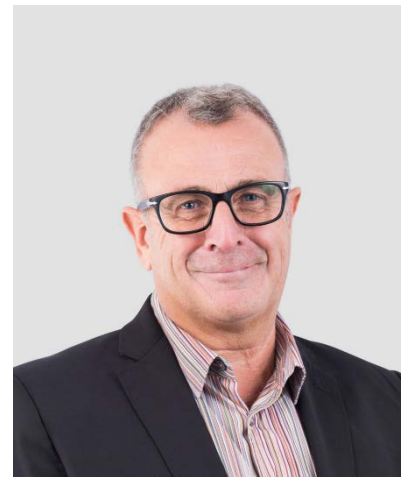
**Neil MacOmish; Board Director, Scott Brownrigg; UK**

Neil MacOmish sits on the Strategic Board at Scott Brownrigg and leads the practice's Cardiff office.

Having graduated from The Welsh School of Architecture (WSA) at Cardiff University, Neil continued his research education at The Bartlett School of Architecture, University College London in Space Syntax Theory. He is currently completing his doctorate in The City and Memory.

Neil works across all sectors, delivering design excellence grounded in sound commercial judgement. He believes that creative and innovative solutions are generated by working closely with clients and working collectively on their aspirations, and that a critical analysis of place and the specific context will result in the most appropriate and best architectural design.

Neil has been appointed to the UN WTO Scientific Committee for sustainable tourism, advising on this year's global conference on sports tourism in Barcelona. He is the only appointed architect.



Neil MacOmish

**Theme: International Working – the merits of the Remote Studio**

## Council of Architecture and Urbanism in Brazil

**Juliano Pamplona Ximenes Ponte; Consultant; Associate Professor, Federal University of Pará; Brazil**

Juliano Pamplona Ximenes Ponte, is an architect and urbanist based in Belém, a Brazilian Northern city. Juliano obtained his Ph.D. in Urban and Regional Planning at the Institute of Urban and Regional Research and Planning (IPPUR) at the Federal University of Rio de Janeiro (UFRJ).

He is currently working as a consultant for the development of state of Pará's Sanitation Plan, he provided consultancy for the Region's Housing Plan between 2008 and 2010. Juliano is a Researcher and Practitioner in the fields of Environmental, Urban, and Regional Planning, specialized in Urban Water Management.

An associate professor at the Federal University of Pará, he teaches and researches in the Faculty of Architecture and Urbanism, in both undergraduate and postgraduate programs, and at the postgraduate program 'Risk and Natural Hazards' Management'.



Juliano Pamplona Ximenes Ponte

**Theme: Covid-19 pandemics: built environment, territorial and demographic impacts in Brazilian Metropolitan Regions**

## Royal Institute of Dutch Architects

**Aldo Vos; Director, Broekbakema; Netherlands**

Aldo Vos graduated from Delft University of Technology in 1996, after which he started practicing.

In 2005 he became Architect-Director of Broekbakema. In this position, he has worked on many projects over the past 16 years. Most famously, he designed "Gebouw X" for Windesheim University of Applied Sciences in Zwolle, which won the Building of the Year Award of the BNA and the Energy Academy Europe in Groningen, which won the Groningen Architecture Prize and the BREAAAM Award in the category Mixed Use & Other.

He has been a guest lecturer at the Rotterdam Academy of Architecture and Delft University of Technology, and is board member of the association Volkskracht for Historic Monuments.



Aldo Vos

**Theme: How did Covid-19 change the way we design?**

