

2021 RIBA International Students Competition

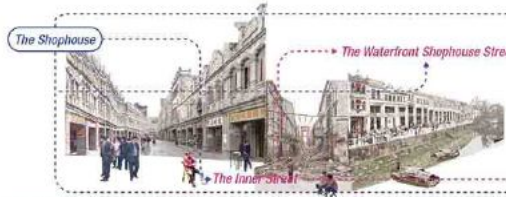
Reimagining Cities and Towns post-COVID



Asia & Australasia Region

RCT1

Current Status



The shophouse street is a typical spatial form for both commerce and communication in Chikan Town. In the shophouse street with a continuous business area, the street spontaneously forms the parking space and the temporary commercial space. The waterfront space of the waterfront shophouse street bears the functions of shipping and recreation. The inner street is an inward-looking street formed by the back of the shophouses. The south side is inhabited by residential houses. The street is small in scale and full of life atmosphere.

Strategy

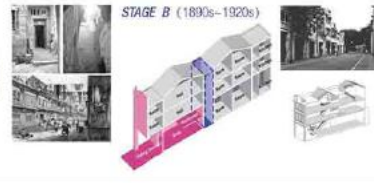
Following the guidelines of the new normal, we have created six layers of space in the traditional cavalcade neighborhood, from the street to the interior of the cavalcade, from public to private, from open and isolated, to meet people's needs for different degrees of isolation and shared space use in the post-epidemic era.

STAGE A (1900s-)



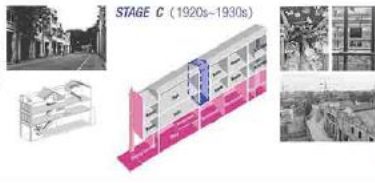
A. The stage of residential Zhutong house
(1) Space sequence: hall-room-patio-kitchen
(2) Multiple Patios
(3) God floor for sacrifice

STAGE B (1890s-1920s)



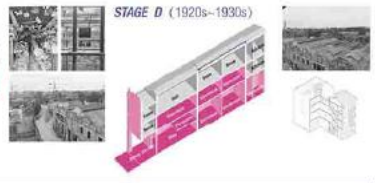
B. The stage of shophouse under the initial influence of commerce
(1) Courtyard → Riding Corridor
(2) Shops along the street
(3) God floor → Store room
(4) Reduced Patio

STAGE C (1920s-1930s)



C. The stage of deepening business impact (Chikan Shophouse)
(1) More storeroom on the 1F
(2) The patio starts from the 2F
(3) The roof ridge be perpendicular to the front elevation

STAGE D (1920s-1930s)

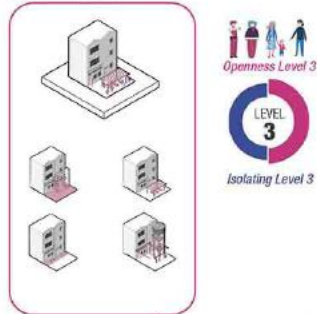


D. The stage in which business dominates (Chikan Shophouse)
(1) Commercial intrusion into 2F/3F
(2) Discard Patios
(3) The top floor be lit by strip skylight

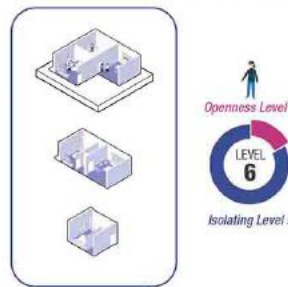
The evolution of shophouse space is a process in which commercial functions gradually invade the building and occupy the dominant position, which leads to changes in the external form and internal spatial pattern of the building. The design will continue the traditional mixed commercial and residential mode generated in this process, and utilize the traditional patio as an important space element for ventilation and lighting of the shophouse building in response to the local climate.

Design Strategies

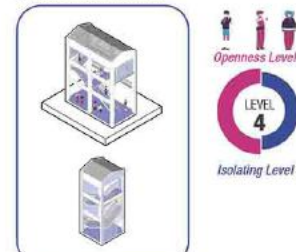
The Inner Street
The design of the water tower square and other structures in the inner street serves as a node connecting the north-south shophouse street with the waterfront, as well as the east-west connection.



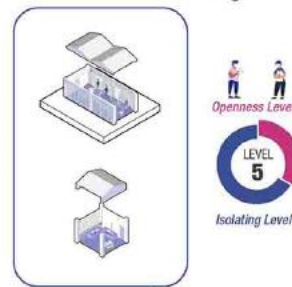
Guest room & Owner's Residence



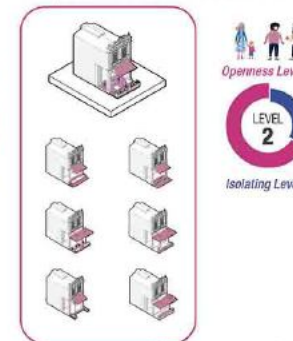
The Teahouse
The target of the teahouse is the owner of the original time-honored "Yinma Hall" teahouse. In terms of architectural function, the original functional division is continued. The teahouse is in the south, and the home of the teahouse owner is in the north.



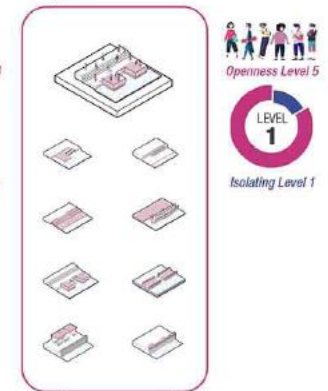
Salon & Shared Living Room



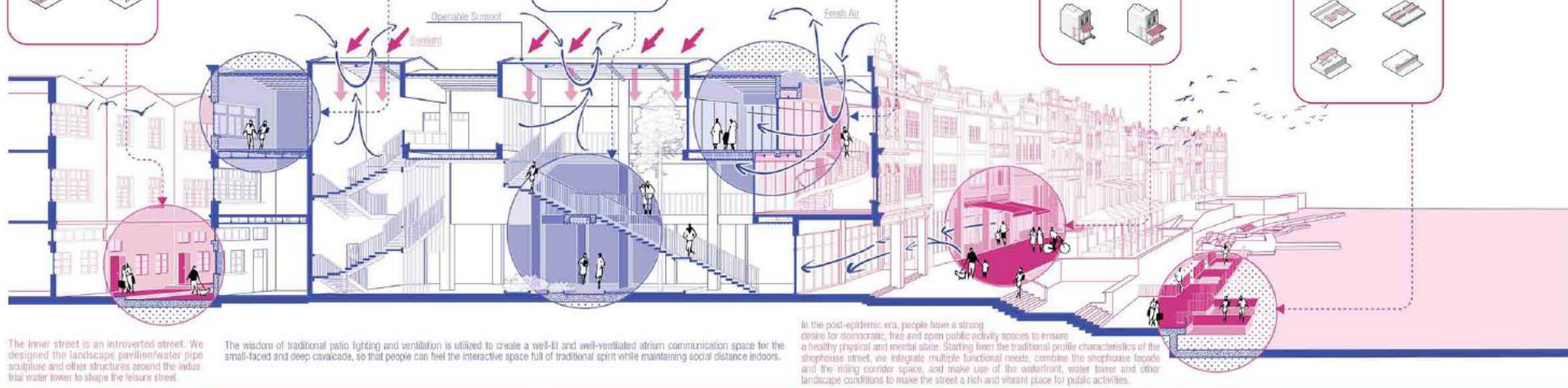
Riding Corridor
The riding gallery is a traditional form of shading for the building. The design firstly keeps the communication continuity of the riding corridor, and the outside area of the shophouse becomes a flexible and functional area.



Waterfront Space
The waterfront space is designed as an open water-friendly space for recreation and rest on the elevation of the third floor, and is shaped into a democratic, free and open public activity space.



Section Perspective



The inner street is an introverted street. We designed the landscape pavilion/water pipe sculpture and other structures around the industrial water tower to shape the leisure street.

The wisdom of traditional patio lighting and ventilation is utilized to create a well-lit and well-ventilated atrium communication space for the small-faced and deep cavalcade, so that people can feel the interactive space full of traditional spirit while maintaining social distance indoors.

In the post-epidemic era, people have a strong desire for democratic, free and open public activity spaces to ensure a healthy physical and mental state. Starting from the traditional profile characteristics of the shophouse street, we integrate multiple functional needs; combine the shophouse facade and the riding corridor space, and make use of the waterfront, water tower and other landscape conditions to make the street a rich and vibrant place for public activities.

The Inner Street

The Shophouse

The Waterfront Shophouse Street

Keywords: Resilient Design, Revitalization, Traditional Shophouse, Street, Space

URN:RCT1

Chikan ancient town is a famous hometown of overseas Chinese. Since the early Qing Dynasty, the Situ family and the Guan family gradually formed a certain scale of town in the competition and cooperation. During the period of the Republic of China, the modern cities and blocks with shophouses as the main feature were built, driven by overseas Chinese investment. The key points of this design include:

(1) Based on the research on the traditional characteristics of the interior space of the arcade building and its response to the local climate, develop a new shophouse space that is multifunctional and complex and adapted to local customs and climate;
(2) Based on the research on the profile characteristics of shophouse streets and their historical functions, combined with contemporary needs, develop a dynamic external public space.

For three different types of streets, the original single street carrying traffic function is used to integrate multiple needs. Combined with the facade of shophouse, riding corridor space and indoor and outdoor interlace, the use of waterfront, water tower and other landscape conditions, the street becomes a place for public activities.

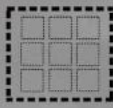
Resilient Design of Shophouse Space based on Tradition Revitalization, Chikan, China

RCT2

Boundary of Resilience RCT2

Having experienced COVID-19 and the blockade of city and community, great changes have taken place in people's lives. On the one hand, there is a trend that more free, comfortable and open city and community space is expected, but on the other hand, the sudden crisis tends to drive the city and community to adopt closed management. This means that the relationship between communities and the city has become more subtle, as well as the relationship between different communities, leading the fact that the space has become more complex. In this case, we hope to explore the concept of "border" to balance the opening of city and the closure of emergency management.

Contradiction



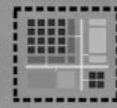
Urban opening



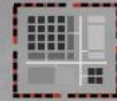
Emergency management

We set our eyes on the most common "wall" used to limit the boundary, expecting to design some fences with a kind of variability. We take the "L" wall as the module and the riveting point as the axis to rotate so that with the rotation of the wall, space inside and outside the wall will also be recombined during the opening and closing, from completely closed to totally open, so as to meet the different needs of different periods. We hope that this kind of "boundary" formed by rotatable walls can effectively deal with the crisis, playing the role of isolation and observation, while at the same time, provide more diversified possibilities for people's passing through and activities between the community and the city, creating more opportunities for exhibitions, gatherings, rest and other various activities.

Boundary



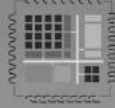
Peace time



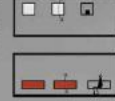
Wartime

Meanwhile, as to the detail design of the wall itself, according to actual situation and measure, holes of different sizes and heights take a place randomly in these rotatable walls. The folded plates in these holes can rotate 90 degrees inside and outside, forming a seat for people to rest, or a storage table for placing other items including green plant decoration and takeout.

Expected Attempt



Rotatable Fence



Facade Details

CLOSED

Solid walls



Transition space



Transparent corridor



OPEN

Smooth channel

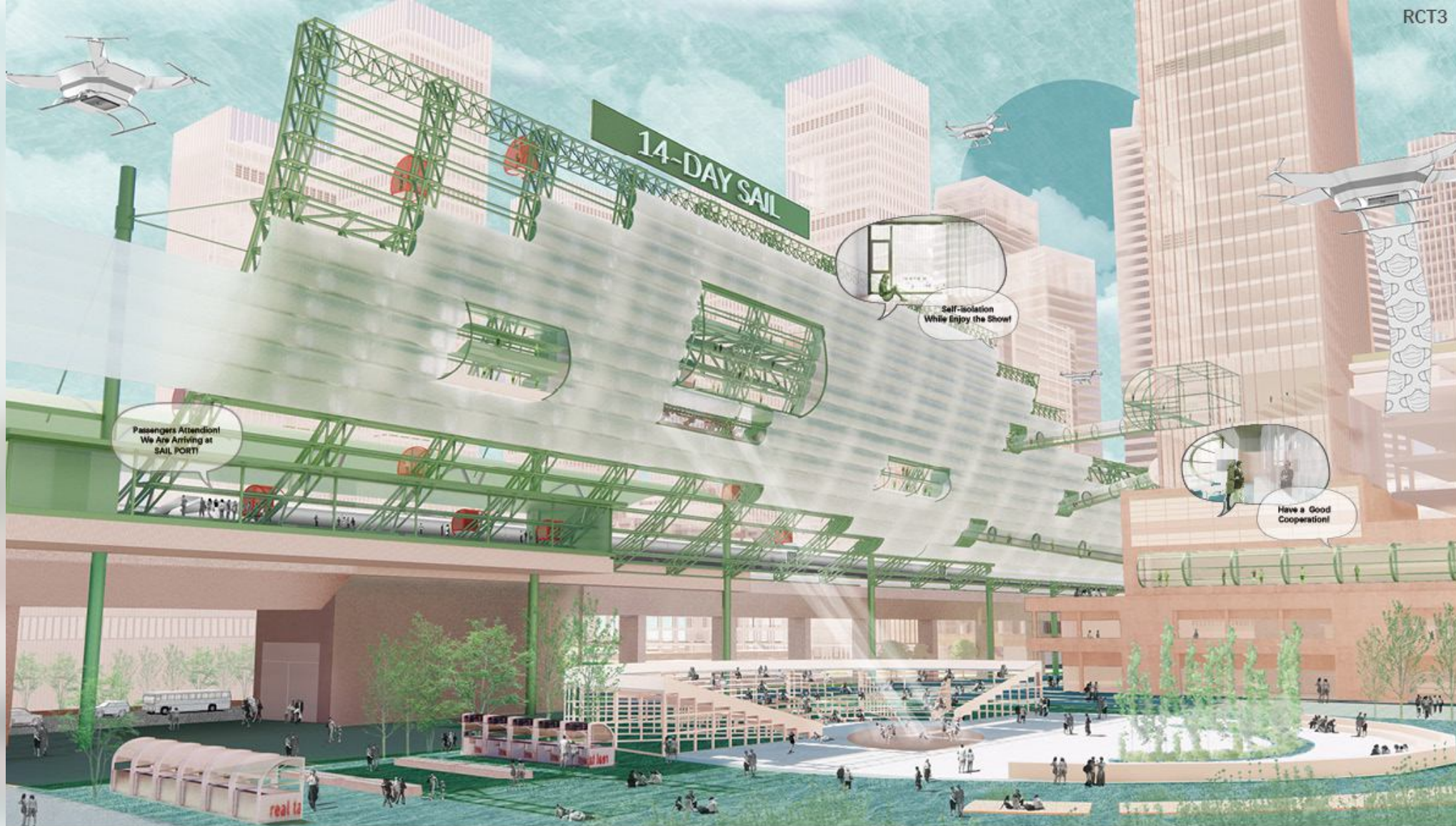


RCT2

Having experienced COVID-19 and the blockade of city and community, great changes have taken place in people's lives. There is a trend that more free and open city and community space is expected, however, the sudden crisis tends to drive the city and community to adopt closed management. This means that the relationship between communities and the city has become more subtle, leading the fact that the space has become more complex. In this case, we hope to explore the concept of "border" to balance the opening of city and the closure of emergency management.

We set our eyes on the most common "wall" used to limit the boundary, expecting to design some fences with a kind of variability. We take the "L" wall as the module and the riveting point as the axis to rotate so that with the rotation of the wall, space inside and outside the wall will also be recombined during the opening and closing, from completely closed to totally open, so as to meet the different needs of different periods. We hope that this kind of "boundary" formed by rotatable walls can effectively deal with the crisis, playing the role of isolation and observation, while at the same time, provide more diversified possibilities for people's passing through and activities between the community and the city, creating more opportunities for exhibitions, gatherings, rest and other various activities. Meanwhile, as to the detail design of the wall itself, according to actual situation and measure, holes of different sizes and heights take a place randomly in these rotatable walls. The folded plates in these holes can rotate 90 degrees inside and outside, forming a seat for people to rest, or a storage table for placing other items including green plant decoration and takeout.

RCT3



THE 14-DAY SAIL

14-day quarantine is widely required among international travelers. While the epidemic is continuing to spread, the 14-day concentrated quarantine space has become an important part of urban life. However, the traditional fixed-point isolation mode strictly limits the scope of activities of the isolators, and the social needs of the isolators can not be met who are in separation from urban life.

We put forward the concept of 'The 14-Day Sail'.

- 1) The 'Sail' is collective homes for the quarantine travelers.
- 2) The 'Sail' is located near public facilities such as financial centers, stadiums etc.
- 3) The 'Sail' is fixed on the side of elevated roads while the platform on the bottom providing a connection point for travelers.
- 4) The 'Sail' is composed of many isolated units, allowing one to enjoy the view of the city and indirectly participate in performances and activities.
- 5) Between the Sail and adjacent buildings there are isolate meeting rooms provided.

For isolated people, they can achieve normal life through a series of auxiliary measures and equipment, even enjoy urban activities such as watching performances, attending conferences, which greatly eliminate the sense of isolation.

For cities, the 14-Day Sail of Quarantine reactivated the originally negative urban space and greatly promoted cultural and economic exchanges for humans.



BLOCKS & ATTITUDE



STRUCTURE & TRANSPORTATION



SECTION & ACTIVITIES

RCT4

SHANSHUI EXPERIMENT

Exuberant Metropolis in the Post Pandemic Era

Cities, constituted through the epitome of the capitalism: grand openness, has been **deconstructed** spatially and logically during the pandemic. After that, people would call for a city with **ecological sustainability, tenacity, social connectivity and digital accessibility**. Thus, the design conducts an experiment to address: **the relationship among nature, construction and virtual reality** in the post pandemic era. The experiment includes four main topics: **urban forest piled by quarantine cabins, gathering places with rational openness, self construction within the grid and emergency shelter along the river.**



The design emphasizes ecology, relies on green earth covered roof, microclimate regulation and other technologies, improves the level of urban sustainable development, shapes urban mountains and forests, attracts people, and provides natural site demand for the isolation cabins.



urban forest piled by quarantine cabins



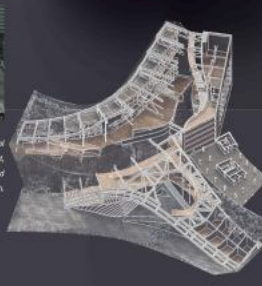
Because of the epidemic situation, urban life in Guangzhou city lacks a place for large-scale assembly. Living spaces are isolated from each other. Uncertainty and social isolation make people call for a high-quality social space to resolve social contradictions and create new opportunities for people to know and meet.



gathering places with rational openness



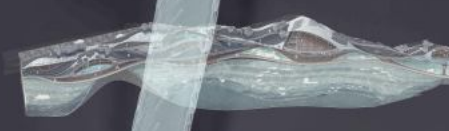
In high-density urban life, it provides elastic incremental space through dome coverage. People are self-sufficient, built independently with the family as the unit, and transform the city into a spatial state of fine growth.



self construction within the grid



The underground development of urban waterfront flood control space provides a natural large space and shelter for the epidemic demand. As an elastic protective line of the city, waterfront space has also become an elastic defense line for repeated epidemic.



emergency shelter along the river

RCT5

ARCHIPELAGO,
PARTICLES CONNOTING WHOLENESS

URN : RCTS

ARCHIPELAGO
Island-like buildings bearing 'wholeness as a city' are planned. They are an 'island' of logistics and data infrastructure. Each island responds to the pandemic and climate crisis as a solid 'node'.

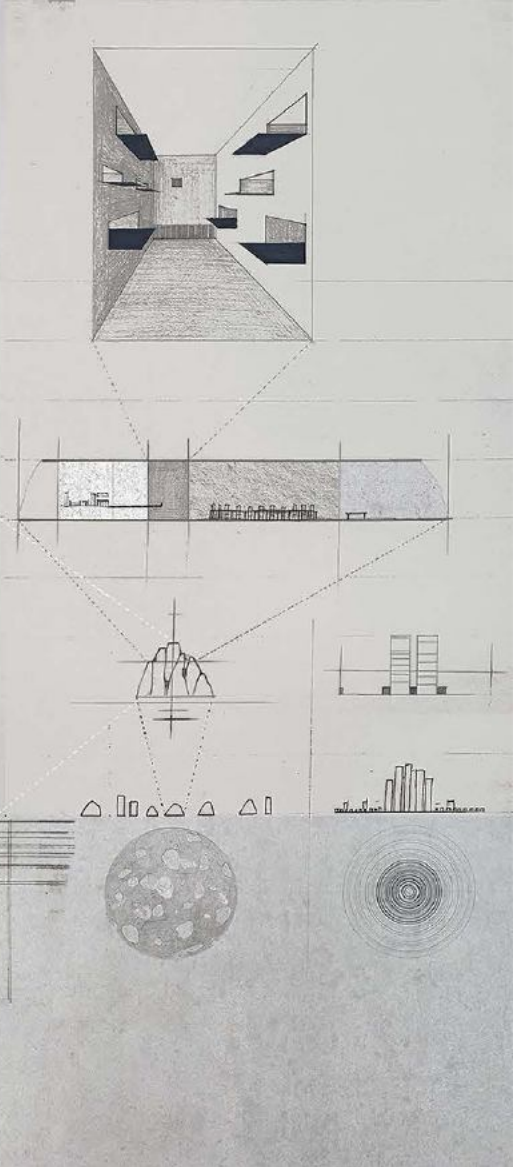
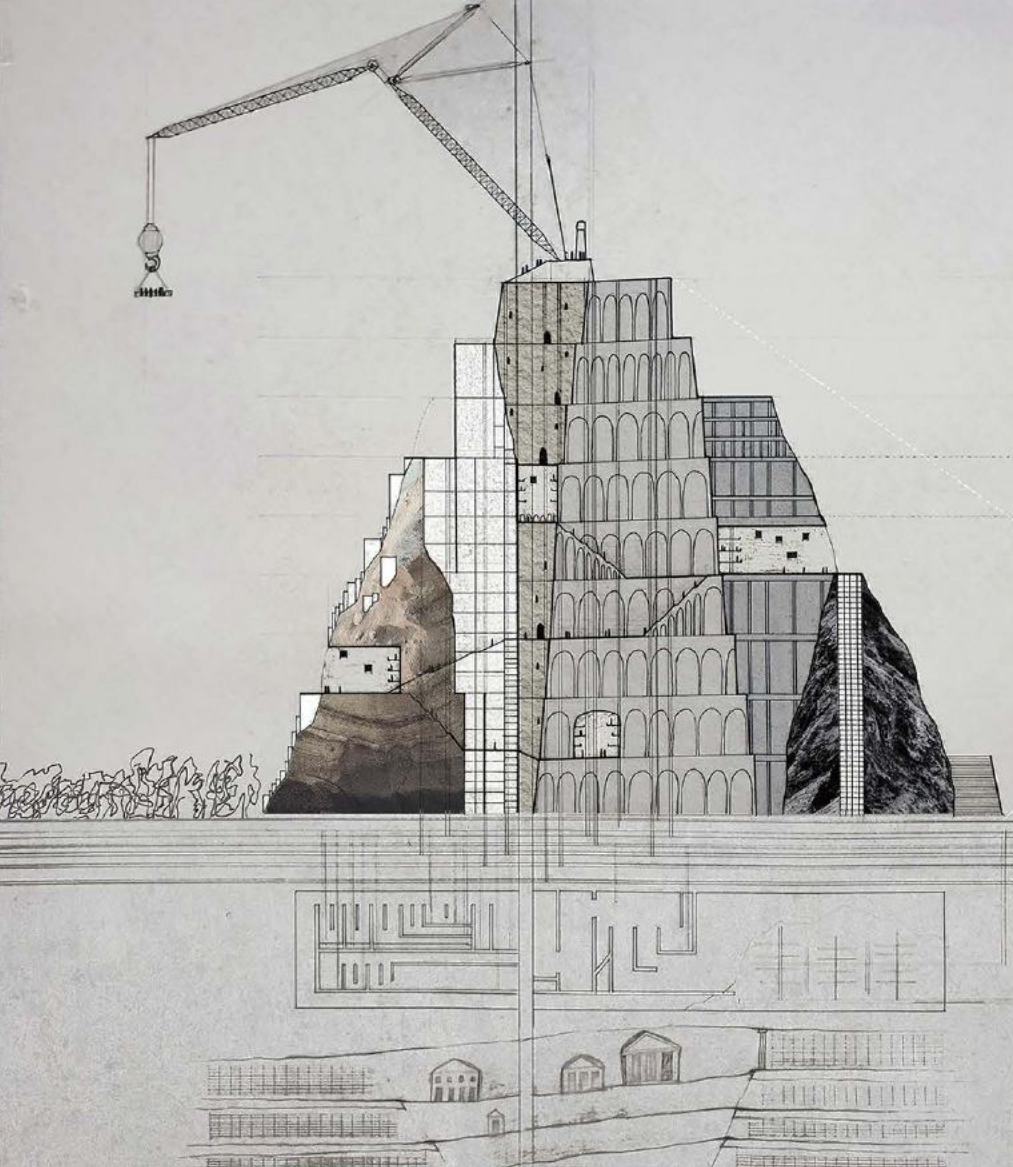
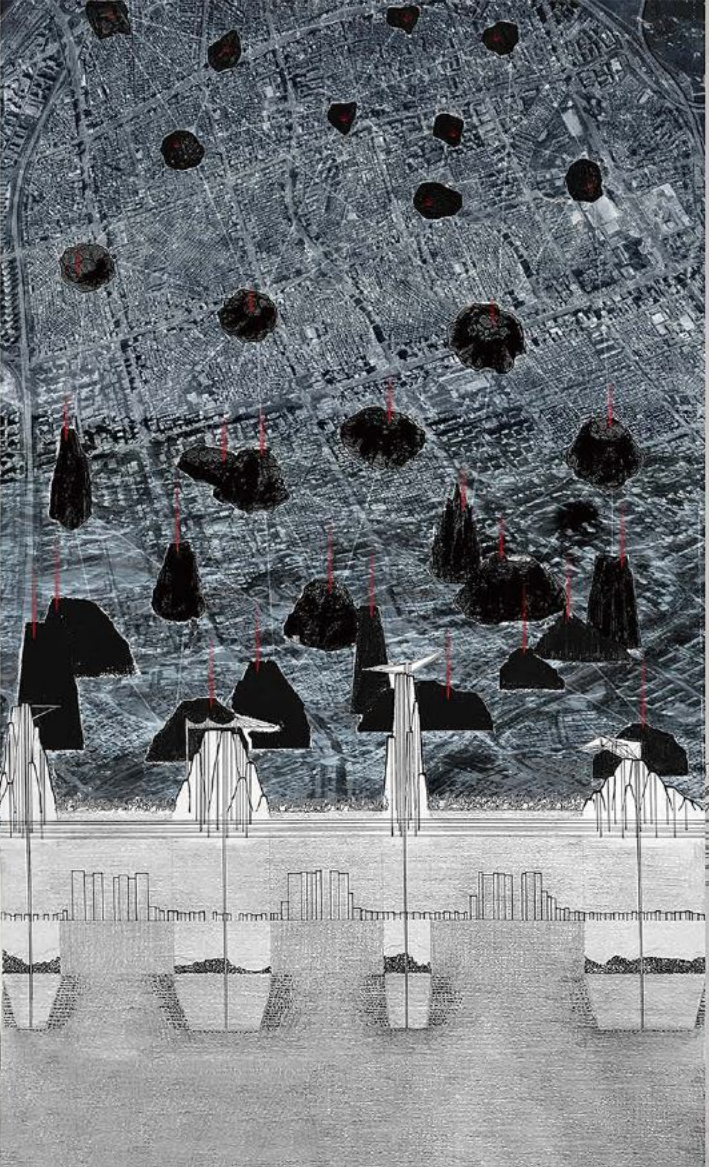
NATURE / ARTIFACT
Unlike the distribution of buildings in existing cities, humans and nature can last by relating their distinct areas, through the polarization of the density. Lands outside the island is a wild nature with difficult access by persons.

MULTIFUNCTION, WHOLENESS
Each program, involved in dwelling, is not stacked vertically, but one on the horizontal plane, separated but adjacent. Vertical layers are accumulated in horizontality. A shelter and a workspace are close together, on one floor. The distance between the work area in the center of an existing city and the residential area of the outskirts could be reduced, and the vertical hierarchy in existing city becomes loose. 'City' fundamentally colonizes nearby areas, but the proposed building as a city island, connects otherwise. On top of it, a machine lets people encounter the outside world. Under the living space, distribution going fast while persons don't go out. Under the distribution infrastructure, there are incinerators and landfill sites. The island won't just push it away to the outside. At the bottom, dead bodies or the ashes will be stored. It can't be self-sufficient, but it connects wholeness.

PUBLIC SPACES
Public space can last as a vertical alleyway with linearity. Also, a pocket spaces in each area and balconies stretched to the place can realize small number of indirect, proper encounters.

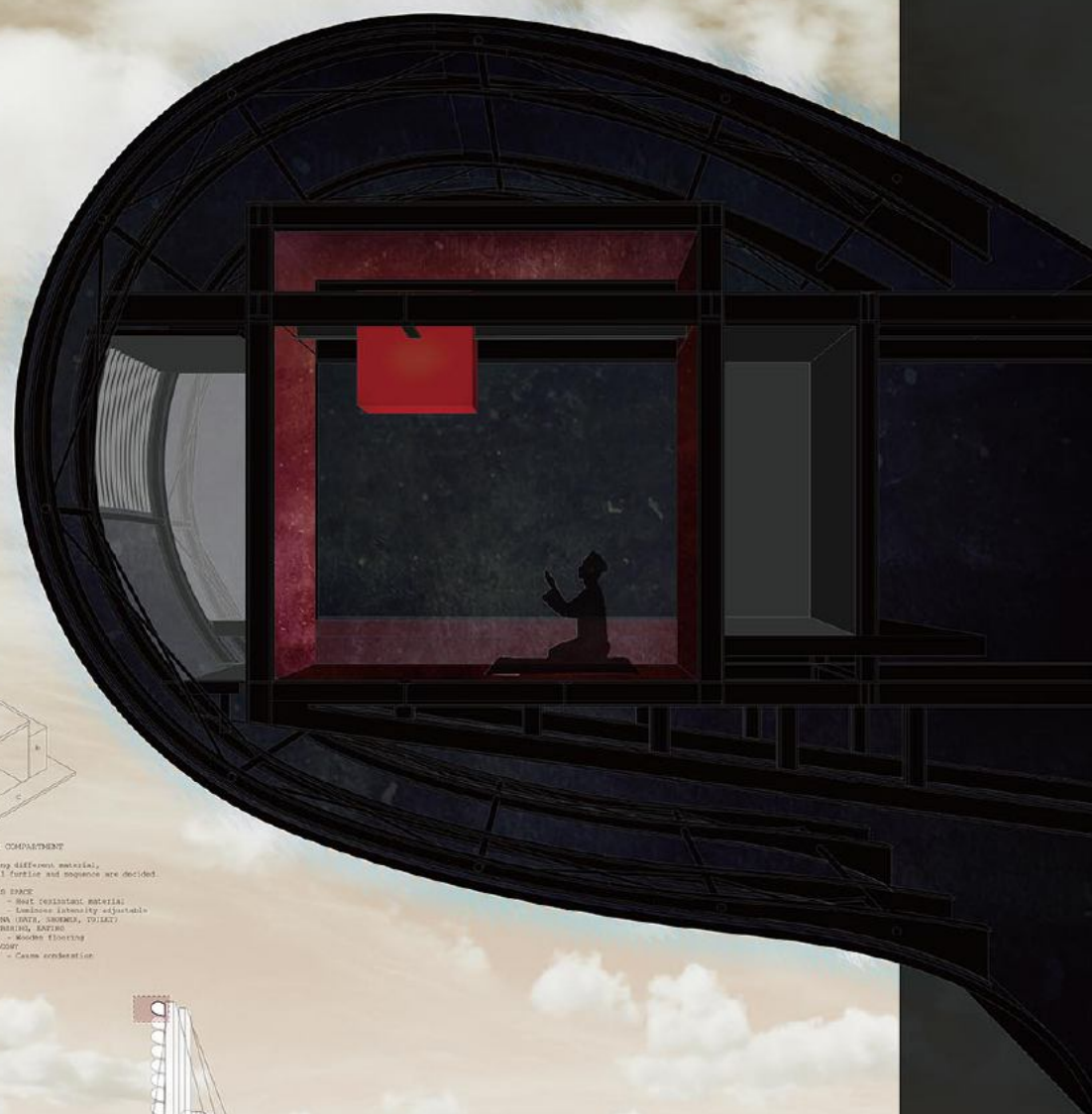
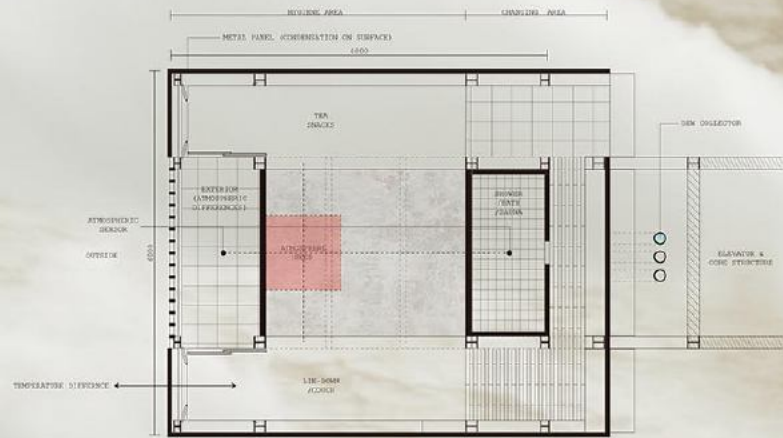
CONTINUITY
Clearly limiting the range of development, that is manipulating the disposition and density of artifact and nature can fulfill the real commonality.

By designing a wholeness as a city, human can adapt to disasters from outside, and recover the nature.

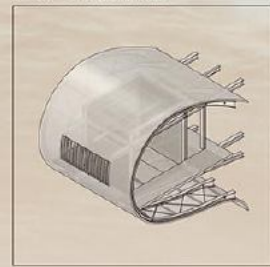


RCT6

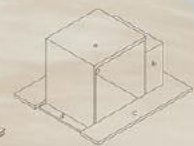
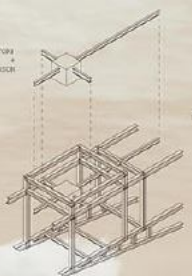
PERSONAL HYGIENE CELL



ANATOMY OF A HYGIENE CELL



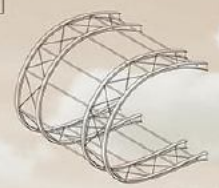
ATMOSPHERIC SEED GENERATORS + SEEDER



SPACE COMPARTMENT
 By using different material, special texture and sequence are decided

- EYES SPACE - Heat resistant material - Emotions liberally adjustable
- SUNNY (WAVE, SWIRL, TWIST)
- APPEARING, RHYTHM - Music theory
- HALOUSE - Case combination

CORE BELECK
 Structure maintain the shape of the skin



SKIN STRUCTURE
 Structure maintain the shape of the skin

SKIN
 The birth on the surface of the skin.
 The curved shape of skin lead due to vertical core structure which carrying down to the RESERVOIR lying below the cell level.



URN: RCT6

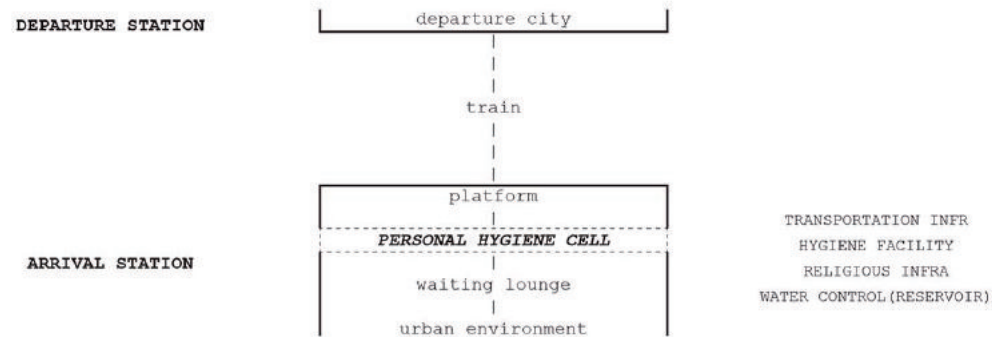
Though we're living in this contemporary together, we have made lots of boundaries between me and you or in- and out-. As a boundary between two states, train station attracts people from various origins.

'PERSONAL HYGIENE CELL' is a personal space unit, temporarily accommodating travelers individually by quarantine themselves from new surroundings such as climate, culture, and custom of arrival city, which providing grace period between getting-off(platform) and way-out(waiting lounge)at the station.

Staying in the 'PERSONAL HYGIENE CELL' is more than a sanitization procedure. It causes 'change of state' to both travelers and the atmosphere around the cell. In the cell, travelers wash themselves, change their clothes and get some refreshments. And they also pray and meditate for their mental refreshment.

Around the cell, the air changes into water by atmospheric differences between inside and outside of the cell. A dew gets its birth on the outer surface of the cell and flows into reservoir.

Quarantine of Pandemic era is not a crisis of everyday, but a chance of looking back in the era of differences and discriminations.

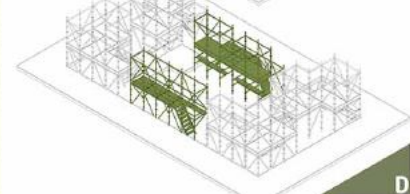
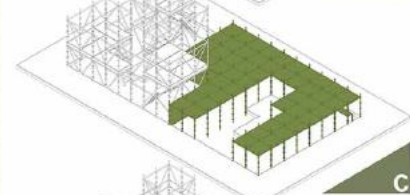
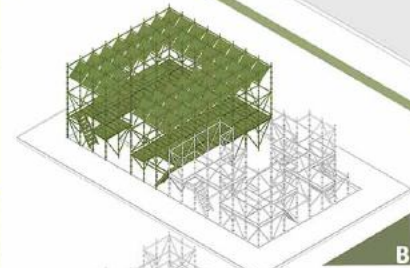
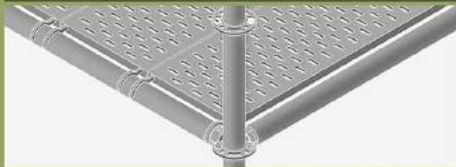


RCT7

Assemblable Spaces: RCT7 Building up Small Communities in Cities

Due to social distancing against the pandemic, the chance of building relationships in public places which are densely populated has decreased. Therefore, the reliance on creating relations in small-scale communities has comparatively increased. Unfortunately, cities failed to provide proper and adjacent spaces for small-scale communities where we had to build relationships during social distancing, which caused various social disorders. For instance, Corona Blue. By newly designing a park where we generally built relationships and applying a new system on park using scaffolding in constructing sites, I would like to suggest how cities can provide spaces for small-scale communities to maintain healthy relationships coping with disconnection during the future pandemic-like social crises.

The proposed park is composed of separable plant pot modules. When the pandemic strikes, the park changes its form. First, some modules are levitated vertically by scaffolding to create hanging gardens (A) and additional spaces beneath them for small-sized groups. Vertical and horizontal gaps created in this process can keep groups out of being overly crowded and make it possible to maintain their relationships safely even in the pandemic. Moreover, because scaffolding has flexibility in changing structure, the park can vary its themes such as a museum park (B), an additional screening center (C), or an outdoor stage (D). Second, the other modules are transferred from the park to the places remotest from it. Centering around the relocated modules, the space for a small-scale community is created. In this case, people can customize the structure reflecting their common needs during social distancing such as a communal childcare space, a farming facility (E), a terrace (F) or, simply greenery. Finally, after the end of the pandemic, modules can be disassembled and stored in storage or reused in constructing sites.



RCT8



Infinite-layered Wraps

URN: RCT8

Epidemic limits the scope of people's interaction and activity, while the relationships between people and nature are fragile. Hence, we want to reconnect these relationships by wrapping people's living spaces.

● Infinite social opportunities

Allow people to enjoy the experience of moving between different "Wraps" with more interaction and living situations. Under epidemic period, home isolation and working from home are normal, whereas face-to-face interaction is difficult. The "Wraps" defines various area for isolation and infected people, allowing them to maintain social lives during the time.

● Infinite possibilities for linking nature and living space

When there is more than one wall between man and nature, natural elements can permeate into different levels.

In order to perform the idea, Mitsubishi Jisho Sekkei, inc. provides a base of a abandoned red-brick factory building. By renovating this 15m-high factory—not a scale of human but of nature, we hope to bring natural elements back into human living space, and create a public space for community. In addition, creating infinite-layered living space in the same scale. The future is full of stories and social possibilities in here.

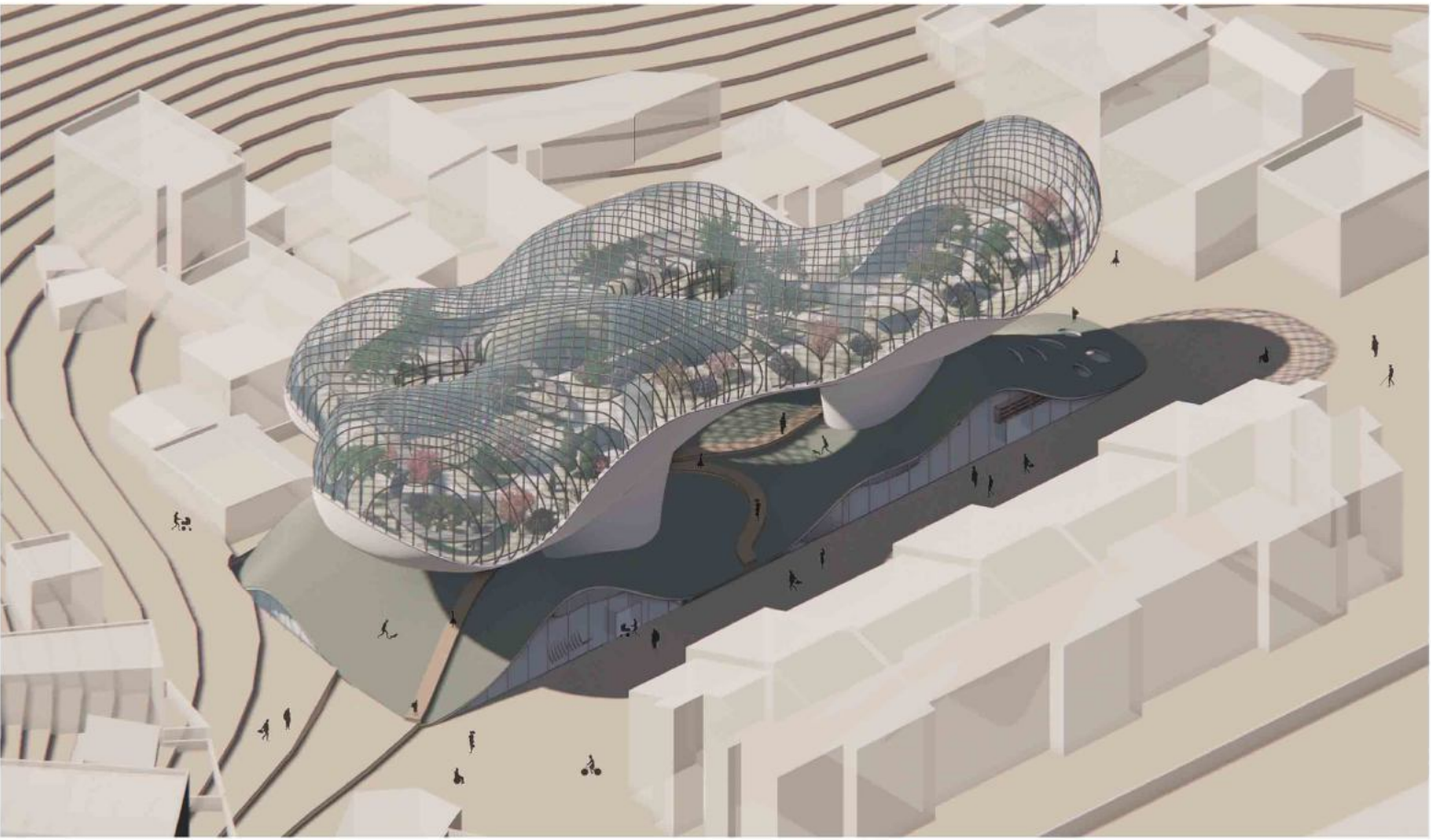


Story 2
Solitude & Interaction

Story 3
Tranquility & Jollification

Story 1
Infection & Health

RCT9



Vallbona's Garden of Eden

URN: RCT9

In the days shrouded by the epidemic, people are scared of gathering in public. When entering the post-pandemic era, architecture could become a medium to help rebuild the trust between people.

The project is supposed to be built in Vallbona, a forgotten town on the outskirts of Barcelona. Vallbona is famous for its agricultural cultivation. It has the largest agricultural plantation in the suburb of Barcelona, but is also plagued by aging and high unemployment.

The building aims to add vitality and social cohesion to the region after the pandemic, while also responding to some crisis of the environment and people's health. It is a learning center about botany and planting technology: composed of the top greenhouse, the accessible outdoor grass slope in the middle and the multifunctional space at the bottom. In addition to the local residents, people from downtown Barcelona, especially children, are welcome here to learn botany and cultivation. They can try to perceive nature here, or just have fun and socialize freely. Moreover, this learning center can not only provide a positive social place, but also help solve the unemployment problem of local farmers who specialize in plant cultivation.

Furthermore, the greenhouse can increase the biodiversity of the city to a certain extent. In future extreme weather conditions, some plant species will not be suitable for outdoor survival. The greenhouse here could become a shelter for plants in the city, and these plants can still be used for botany teaching for children. A Garden of Eden is expected to appear in Vallbona, creating an opportunity for the next generation to recognize the present situation and learn to protect the environment as well as the home for human survival.

RCT10



From village to farm – Reinterpretation of public space for the post-covid world

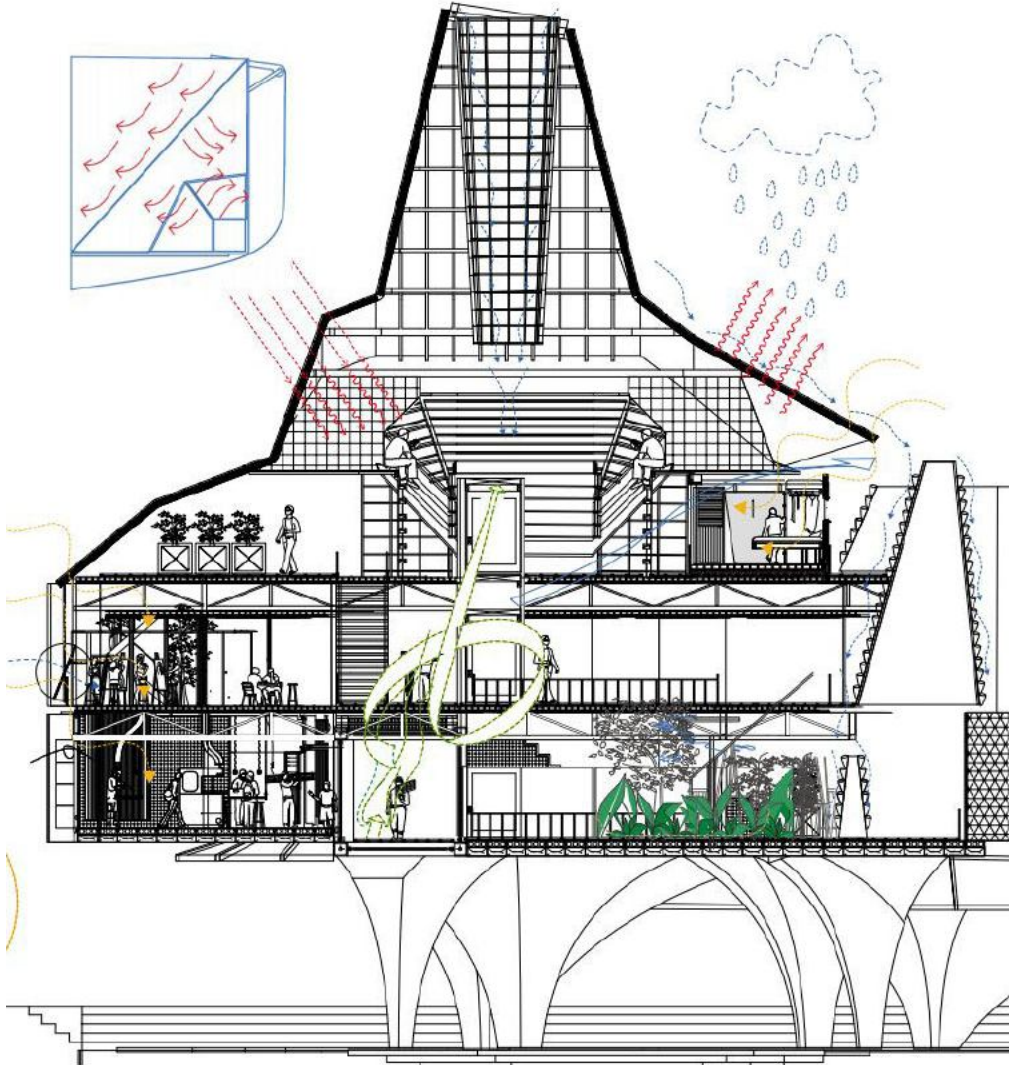
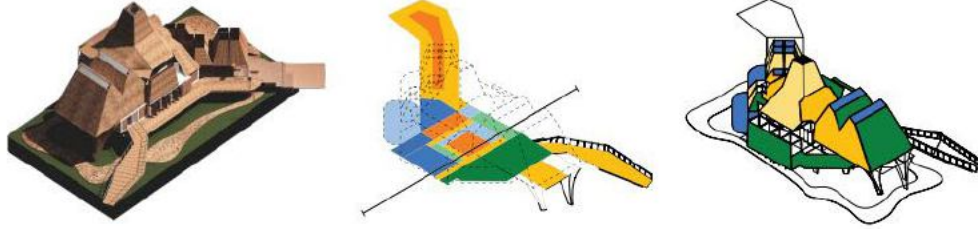
Individual work by RCT10

Since the Greek era, public spaces have been the place of revelation, oration and visibility inside which the most elevated nature of humanity is engendered and incarnated. Public spaces, in its purest definition, allows for the sublime possibility of the reunion of people and the exchange of thoughts, which seems to be the a priori conception and has persisted itself throughout. Nevertheless, the conceptualization and the presumed justification of the omnipotence of public spaces, as have been witnessed in the year of extraordinary difficulty and challenge, call for the re-examination and redefinition. Social distancing and necessary quarantine protocols provoke the metamorphosis of public spaces and we, as future architects, are obliged of the seizure of this historical opportunity, and under the new norm of post-pandemic, should envision the positivity of public spaces and the essential frameworks regarding its composition, program and typology.

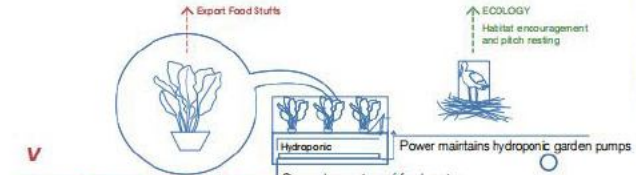
Focusing on the circulation and diverse type the common space might be, the project is located at a village in Barcelona between two mountain chains, where the weather and building density give me the opportunity. The form was generated by an idea of creating diverse function in common-space by using the rotation of different units. Overlapping, intervening and leaving gaps become the main formal expressions of common space. Target users contains outside visitors and internal colleges and faculties, mainly the unemployed people from neighbours. The exclusive aims to meet people with their yearns for forgather since more and more people who are receiving vaccinations and getting back to public space. To make people involved, café and bakery workshop will be open to the public for bakery experience as well as the product enjoyment. Private functions such as class rooms and offices are placed on the upper floor.



RCT11



Water Pedagogy



Water Recycling System

Over time the canal is slowly purified enough for people to use the water beyond merely an aspect for canal movements

Agriculture System

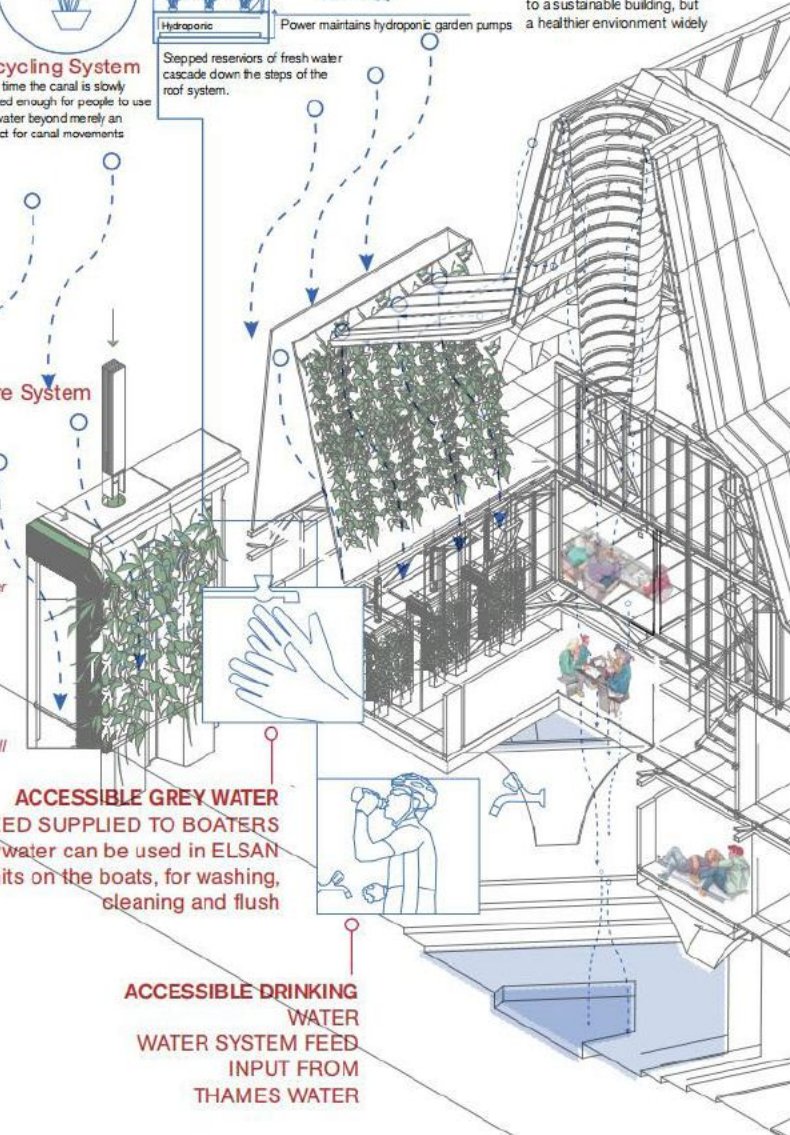
Whilst some water will evaporate or drain away from the plant zone, a large amount will be stored within the roofing zone perimeter around the cultivation wall

ACCESSIBLE GREY WATER
WATER-FEED SUPPLIED TO BOATERS
Clean greywater can be used in ELSAN units on the boats, for washing, cleaning and flush

ACCESSIBLE DRINKING WATER
WATER SYSTEM FEED
INPUT FROM THAMES WATER

This illustration shows the interaction between the agricultural system and the water circulation system for the building.

The intention for this section is to examine the existing energy sources around the site, how they are utilised currently by residents, and businesses, to fabricate models of environmental design that not only contribute to a sustainable building, but a healthier environment widely



Nursing home design in the post-epidemic era

Nursing home design in the post-epidemic era has drawn public concern. In the design, we create a shared space that can effectively control the social distance and provide a low-touch public space for the elderly population.

Among them, the green water circulation system is a significant feature. It is an environment-friendly and pollution-free natural cycle. It uses the condensation of water droplets to gather viruses in the air and obtain clean and sanitary water through disinfection, which saves water resources and reduces harmful substances and viruses in the air. Water droplets condense into a stream of water, and the collision between water molecules in the stream and carbon dioxide in the air will affect the flow rate of the air, promoting air circulation and improving the breathing quality of the elderly. In addition, the pool formed by the greenhouse can be an influential factor affecting people's social distance. While effectively controlling social distance, it can provide a low-contact and communicable public space for the elderly on the ground floor.

Moreover, the house is divided into many rooms by each function. They can do many things in these rooms, such as cleaning, eating, working and entertainment without frequent contact with others, so that the elderly can live in low exposure conditions, effectively reducing the risk of exposure to infection.

We also provide a new model of shared space like wide plant-filled balconies, which can allow people to experience the sense of communication and the flow of emotion in an environment of limiting the number of people along with effectively controlling the social distance while contacting. There are sensor gates for doors in public areas and voice recognition for smart furniture and calls so as to prevent and avoid direct or indirect exposure to infection.

In Nursing Home, the elderly can interact with others, while conveniently and effectively isolate themselves when encountering emergencies in this new type of shared residential space by using separate, automated isolation rooms. They can also have more possibilities to be in close contact with nature, and have a more free and open living environment than staying at home. They can take walks, exercise, and even have a limited number of friends for activities.

Overall, our aim is to connect the shared house closely with the life of the elderly, making the facilities functional, clear, healthy and safe, and at the same time achieving comfort and freedom.

RCT12



Small Gathering.

Small herbaceous workshop

Botany workshop corridor

Central Gathering Space

Botany workshop Corridor.

Small gathering.

Registration number: RCT12

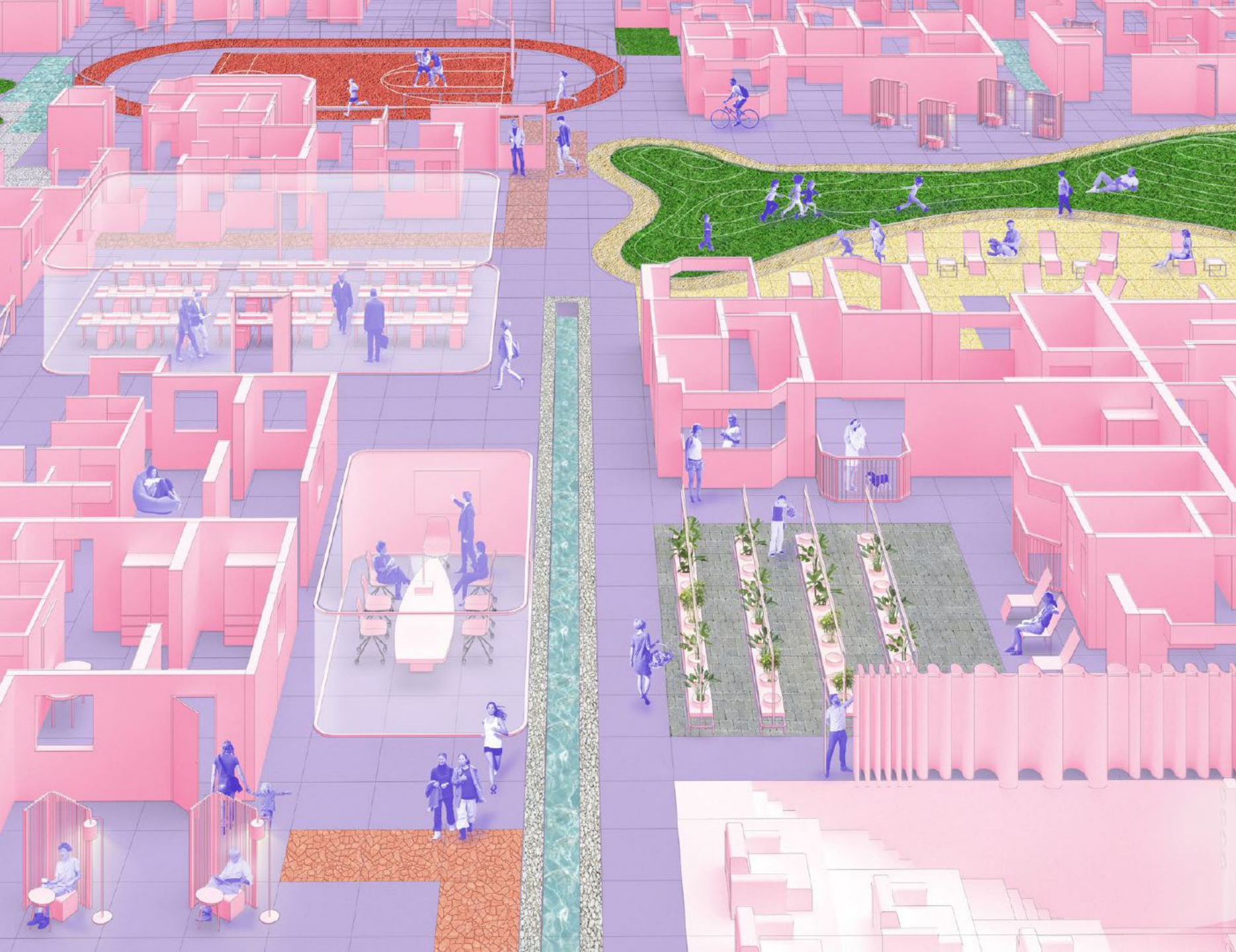
Project title: **Exposure**

Project narrative:

In this post pandemic time, the project is created based on the thinking of how the way of people's life in the community would change and how learning in the future could become since the crisis dramatically force people to change.

The adaptation of Learning, from my perspective, is a miniature of people's adjustment to crises. It stimulates my thinking of how learning could transform in the post crises background. Isolation exists in people's mind after the pandemic, boundaries become undefined lines. Focusing on a community scale, learning is not served as conventional parallel classrooms in the school, it is transformed to become a diverse machine that hold boulevards of plants, establishing close connection with the nature context. Learning becomes an experience, for people to explore, to connect, to gather, to be isolated. Informal learning experience is formed by more exposing to the environment rather than applying conventional formal teaching mode. Green corridor workshop provides experience of sequence while people are not aware of it. Large gathering amphitheater combined with vertical nature system promotes new learning methods and isolated capsules offer certain privacy and social distancing. The project not only serves as a dwelling building, but an urban device for healing, merging, interacting and adjustment.

RCT13



Living Inside Out as in the New Normal

Since the pandemic, the public has been spending most of time interior: we work, entertain, exercise, learn, even quarantine ourselves in an indoor environment, hence the routine has proliferated an indoor lifestyle globally. Living indoors also indicates that our spatial needs is infiltrating interior in order to support physical and intellectual development, how one could achieve social interactions in such isolated domestic environment and how one could experience outdoor atmosphere in indoor setting are the two key current challenges in urban realms. Urbanism has long been taken place in outdoors instead of indoors. Our city needs to extend inwards simultaneously in order to address the New Normal changes.

Dichotomy of interior and exterior is gradually dissolved and replaced by interior-exterior spaces, where we can enjoy fresh air, daylight indoors as well as a range of privacies and openness. Moreover, this hybridized indoor space could establish a new spatial setting. On one hand we could customize our own microclimate cater for individual's lifestyle through temperature and hygiene control. On the other hand, one could utilize variety of indoor elements such as partitions, curtains, furnitures, floor tiles to achieve resilience, even an adaptive environment when facing our current global health challenges.

The drawing imagines the integration of interior and exterior experience. By bridging residential buildings in the neighbourhood, each level is connected and perceived as an indoor community to accommodate programs for the routine of work, entertainment as well as personal development. The walls of residential layout are shuffled to move, interact with programs or even stand-alone as a space defining element. Together with the New normal routine today, it presents the adapted social and spatial mechanism of an inside out living in the city.

RCT14

2061 | PABULUM ODYSSEY

Responding to the frequent ban on sit-in services in restaurants imposed by the government, assuming that human contact is the main source of transmission of viruses, the project is to explore, in the next 50 years, whether technology and machines are the solution for people to eat well.

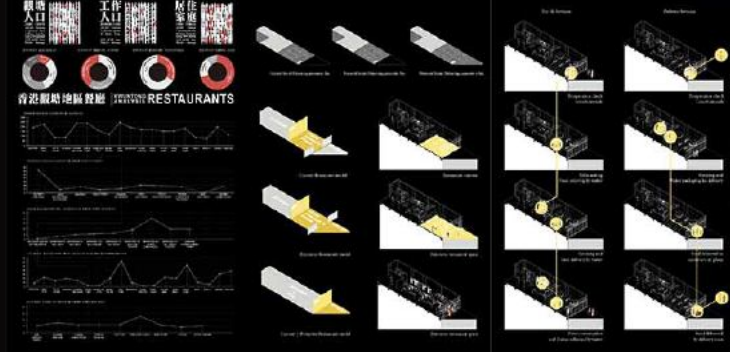
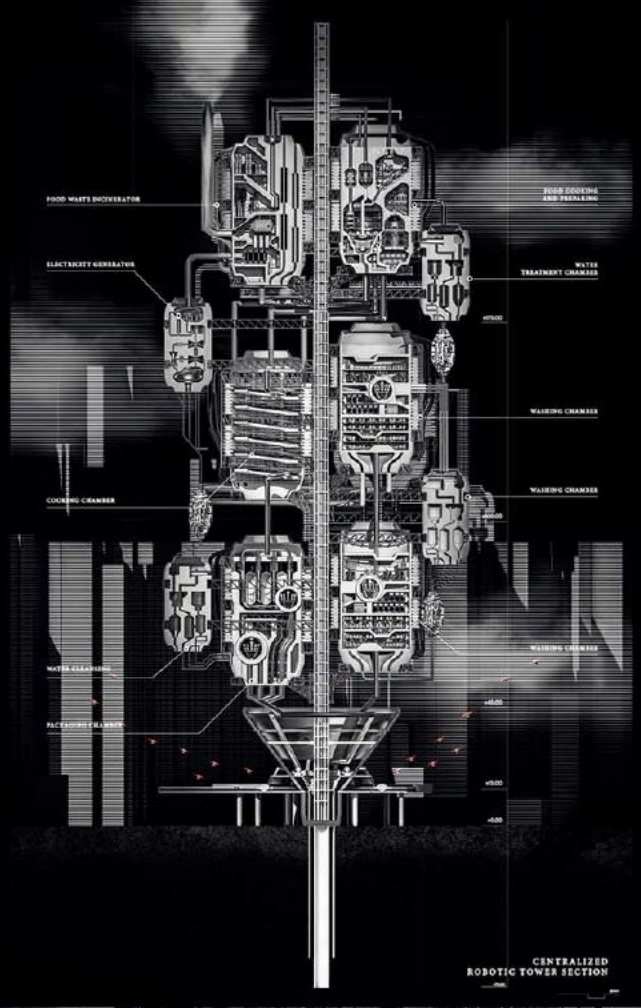
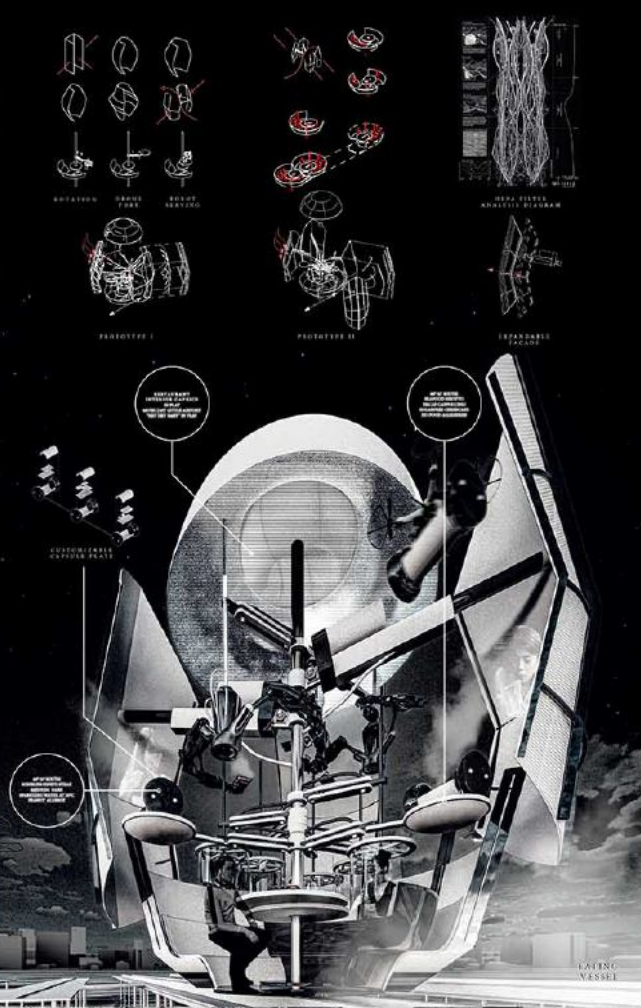
This is a project projecting the age of machine assistance in the future in which pandemic viruses and massive hurricanes may also. How do the machines do with food making, food delivery and food consumption? How do we retain humanity's first direct experience in machine-assisted society?

Five ranch of the MTR station are built underground, resulting in poor ventilation for virus prevention, plus the trend of people working from home, MTR stations are gradually abandoned.

To utilize such a large infrastructure system, and with reference to the high building floor density in Korea Tong and the relatively large proportion of restaurant in Korea Tong when compared to other districts, Korea Tong MTR station is selected as the first prototype to be transformed at some point to deliver food through drones.

When time passes by above all the centralized robotic control, next time is built for all the food preparation, cooking processes, together with the online vessels in which robotic serving systems, medical grade filtration, manual robots, as well as screen protection systems for virtual dining are incorporated. In food vessels are placed on the roadway and analogous with response to motion control.

When compared to MTR stations, the lower building in the lower part, the essential existence of keeping clean, reducing human contact in food production industry. The vessels serve as the most optimal level. It helps people lock the search and experience dining in a restaurant. The vessels and the robot vessels are acting as inseparable entities.



RCT15

A SECONDARY HOME : a social ladder

Radical Intervention of Commercial Infrastructure in Hong Kong

[URGENCY] Case #17 | Intervention on social issues

Support

The building is located in a high-density urban area. It is surrounded by existing residential buildings and commercial infrastructure. The site is situated in a high-density urban area, surrounded by existing residential buildings and commercial infrastructure. The building is designed to provide a secondary home for the community, addressing the need for affordable housing and social support.

Design Strategy

The design strategy focuses on creating a multi-functional space that can accommodate various social activities and services. It includes a mix of residential units, community spaces, and commercial areas. The building is designed to be flexible and adaptable to the needs of the community.

Design Process

The design process involved extensive consultation with the community and stakeholders. It included a series of workshops and public consultations to gather input and feedback. The design team worked closely with the community to ensure that the building meets their needs and expectations.

Design Impact

The building is expected to have a positive impact on the community by providing a secondary home and social support. It will create a sense of community and belonging, and provide a space for social activities and services. The building is designed to be a model for sustainable and inclusive urban development.

Site Context

The site is located in a high-density urban area, surrounded by existing residential buildings and commercial infrastructure. The building is designed to provide a secondary home for the community, addressing the need for affordable housing and social support.

Design Strategy

The design strategy focuses on creating a multi-functional space that can accommodate various social activities and services. It includes a mix of residential units, community spaces, and commercial areas. The building is designed to be flexible and adaptable to the needs of the community.

MULTICULTURAL ACTIVITY CENTRE

This architectural section shows the building's internal structure, including the ground floor, multiple residential floors, and a rooftop terrace. The design emphasizes vertical connectivity and shared spaces between different levels of the building.

SHING KUNG HAN BARRIS

This architectural section shows the building's internal structure, including the ground floor, multiple residential floors, and a rooftop terrace. The design emphasizes vertical connectivity and shared spaces between different levels of the building.

DESIGN PROPOSAL

DESIGN STRATEGY

The design strategy focuses on creating a multi-functional space that can accommodate various social activities and services. It includes a mix of residential units, community spaces, and commercial areas. The building is designed to be flexible and adaptable to the needs of the community.

This architectural section shows the building's internal structure, including the ground floor, multiple residential floors, and a rooftop terrace. The design emphasizes vertical connectivity and shared spaces between different levels of the building.

DESIGN STRATEGY

The design strategy focuses on creating a multi-functional space that can accommodate various social activities and services. It includes a mix of residential units, community spaces, and commercial areas. The building is designed to be flexible and adaptable to the needs of the community.

DESIGN IMPACT

The building is expected to have a positive impact on the community by providing a secondary home and social support. It will create a sense of community and belonging, and provide a space for social activities and services. The building is designed to be a model for sustainable and inclusive urban development.

DESIGN IMPACT

The building is expected to have a positive impact on the community by providing a secondary home and social support. It will create a sense of community and belonging, and provide a space for social activities and services. The building is designed to be a model for sustainable and inclusive urban development.

DESIGN IMPACT

The building is expected to have a positive impact on the community by providing a secondary home and social support. It will create a sense of community and belonging, and provide a space for social activities and services. The building is designed to be a model for sustainable and inclusive urban development.

RCT16



2021 RIBA Students Competition - Reimagining Cities and Towns post Covid
Unique Registration Number (URN): RCT16
Title: Dystopia Redivia - A bleak warning

Title:

Dystopia Redivia - A bleak warning

Narrative:

“Mankind ravens in an imminent future all the resources which had taken millions of years to store up, no one really listens to the admonishing voices, over-produce and over-consume inexorably until everything impoverished. Trees are down, the topsoil depleted, the glaciers melted and animals go extinct. Plutocrats and the elite have set off for space colonization. The aftermath on Earth is a desolate ghetto of low-life engulfed by the sprawl of urbanization, along with internecine rivalries between the outcasts, living in a grim utopia, but still breeding without control...”

-

The stagnation of our world under the pandemic has exposed the Achilles’ heel of global capitalism, which was reproduced through the intensification of inequality. For centuries our generations have been educated in the same manner, doctrine is what everyone follows, thus assimilated into a single managerial paradigm, in which the preceding illegitimate power of market economy enriches some people at the expense of others. Our world is unscathed from such vicious homogenization, cities are no longer positioned in their autonomous domain, territories are effacing, cultures are being commodified, architecture is becoming an explicit index of late capitalism and utilitarianism. This lopsided yet aggressive mode of capital conglomeration only churns out scenographic icons or generic environments in favor of efficiency, heralding a future of socio-economic misery.

-

Our city is sick and needs to be healed.

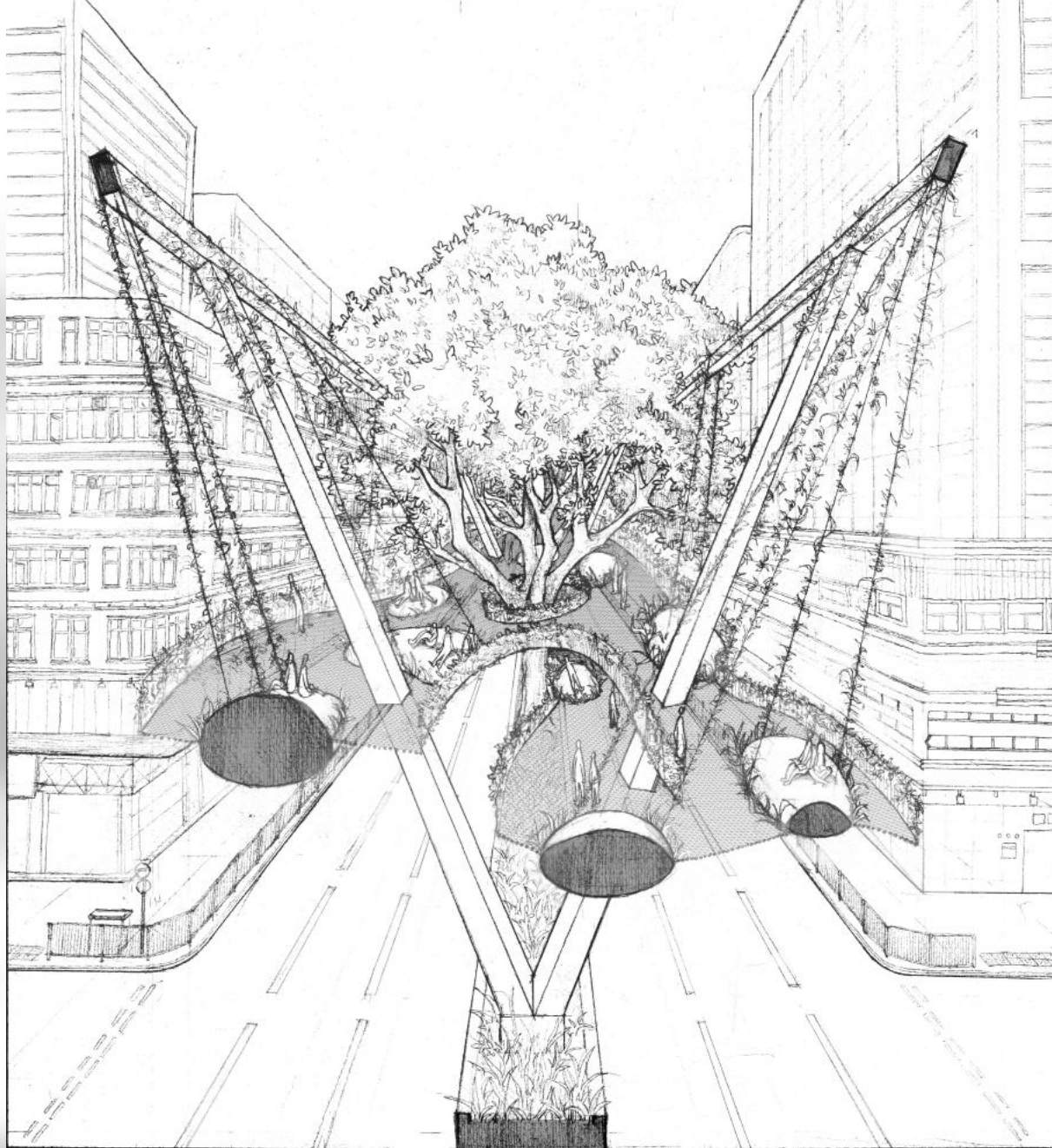
We are entangled with our time, with our environment, and with the history that incubated in feudal and petrified forms.

We shall not kneel before conventions and finalities, and the past that enslaves us with our own falseness and pitiful fears.

We are designers, the constructors of worlds, the hedonists who venerate the dawn against the darkening sky and worship the primordial habitat of humanity.

(289 words)

RCT17



RCT17

RCT17

2021 RIBA STUDENTS COMPETITION

Brief For Reimagining Cities And Towns Post-Covid

With 70% of the land covered by hilly terrain, Hong Kong is packed with people that there is barely any open space for people to use. The virus outbreak and the following lock down further highlighted the dearth of urban public spaces under social distancing policy. More and more people go to the mountains to escape from the dense, small cities and households. This inverse living style discloses the possibility of developing a second ground level. At the same time, the increased need of interacting with the nature is also observed, which gives rise to the gradual human destruction to the nature. In light of this, we propose to bring the nature back to the cities through integrating the footbridge with greenery. Mong Kok in Hong Kong was chosen to be our referenced site, for its footbridge system is one significant example of how an elevated ground can affect the dense urban area, relieving the crowdedness at the real ground level. Our design centers the big trees, expanding different levels of bridge surfaces to create multiple layers of greenery. Through the design, nature is accessible within the everyday life circle, creating a more sustainable living environment, and protect the mountains from overwhelming human activities.

After the pandemic, we see the transforming relationship of people similar to an archipelago - the duality of physical separation and the eager to bound, to form a whole collective. Following the thought, small islands are scarcely spread on the footbridge, providing public open space for people to stay and use. Between islands is the iron mesh that separate each solitary island, yet not completely isolate any of them. Busy flow of people walk on the mesh, with the prosperous vegetation blurring the boundary. Distance in this archipelagic condition turns into an alternative form of connection. People enjoy their solitude, and are able to feel the existence of the others at the same time.

RCT18

Neverland built for Equity



High-density community post-Covid

URN:RCT18

In the most economically developed area of Shanghai, housing has become the top issue.

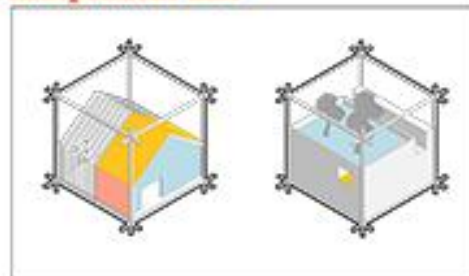
High-density communities are one of the measures to solve this problem. At the same time, it is also suffering from the impact of the epidemic. Traditional communities need to make changes to deal with this problem.

● Fairness core

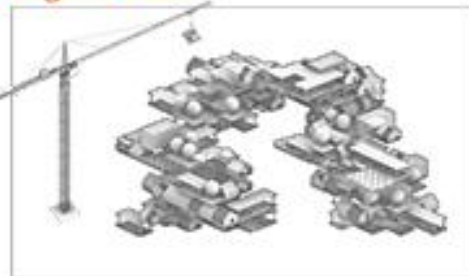


Information collection
Information processing
Information feedback

● Independent unit

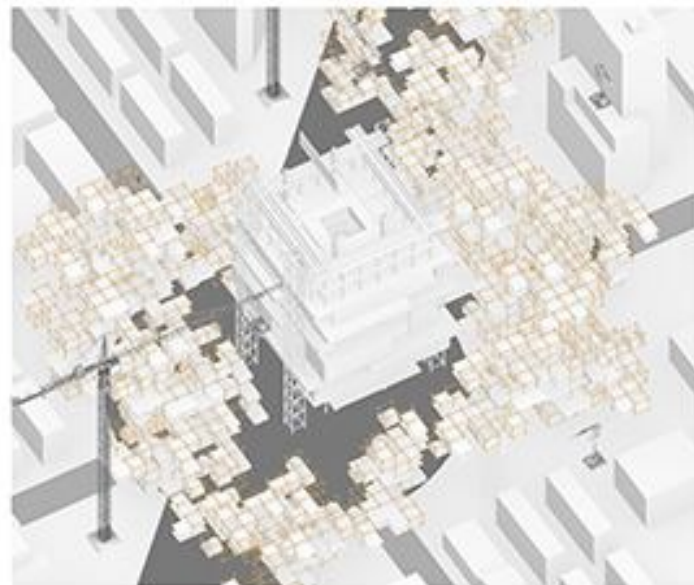


● Organic build



Population Surge

The population of Pudong New Area has increased, including workers, residents, tourists and financial practitioners.



How to solve epidemic prevention problem

In this community, all individuals are equal, and you can customize your own personalized living facilities through your mobile phone

Once your life needs have changed, don't worry, we will make adjustments

Each unit can be moved by mechanical equipment.

Once someone is sick, their individual unit will be moved to a specific area. In this way, the entire system can be continuously updated and grow healthily

This area can also be turned into a prefabricated ward to deal with some public health emergencies.

Topic: Never Land (Build for equity)

URN: RCT18

High-density community post-Covid

In the most economically developed area of Shanghai, housing has become the top issue. High-density communities are one of the measures to solve this problem. At the same time, it is also suffering from the impact of the epidemic. Traditional communities need to make changes to deal with this problem.

Population Surge

The population of Pudong New Area has increased, including workers, residents, tourists and financial practitioners.

Design Strategy

First, a core is located in the center of the city as the brain of the city. Through the collection and feedback of information, the unit of life belonging to each person can be customized. These units include different types, such as residential, landscape, public space, and urban service facilities. Afterwards, these units will be added to the grid by equipment to form a sustainable construction process

How to solve epidemic prevention problem

When people gather together, the probability of infection may be greatly increased. In this community, all individuals are equal, and you can customize your own personalized living facilities through your mobile phone. Once your life needs have changed, don't worry, we will make adjustments. Each unit can be moved by mechanical equipment. Once someone is sick, their individual unit will be moved to a specific area. In this way, the entire system can be continuously updated and grow healthily. This area can also be turned into a prefabricated ward to deal with some public health emergencies.

RCT19



Vallbona, continuity of nature and landscape

URN: RCT19



URN: RCT19

Vallbona, continuity of nature and landscape

During the COVID-19 pandemic, people in the cities have little access to the nature, and the communication between different groups of people reduces. Therefore, cities post-covid should provide people with an environment in which landscape blurs with urban constructions and people from different social groups could interact. “Vallbona, continuity of nature and landscape” is an urban project in the small town of Barcelona, Spain. It consists of three interrelated projects: A pedestrian bridge on an existing bridge, a community canteen and a community learning center. They all try to realize the ideal environment from different aspects.

Firstly, the pedestrian bridge tries to use the intertwined paths of different types of paving to attract people to come to the small town. Although Vallbona is remote, it keeps the valuable sample of two different types of green land, one for garden and one for farmland. By extracting these two elements to the paving, the bridge becomes the new image of Vallbona. By following different routes, people could try gardening or do farm work and interact with strangers happily.

Secondly, the community canteen uses a volume sunken in the topography to create a piazza-like site for the community to gather. What’s more, a row of trees around the highway is a significant part of the construction. The trees become the perfect insulation for the original acoustic problem and people in Vallbona could enjoy food or just rest surrounded by all the landscape elements: Trees, the terrain and the water.

Thirdly, the learning center uses the form of landscape architecture to reflect the restricted form of urban green space in Barcelona. The two rows of volume, interact with each other but also extend by themselves, offer Vallbona’s people a new form of urban green space and new chances to meet people from Barcelona.

RCT20



Light up the city beacon

— Post-covid Immersive Art Memorial design

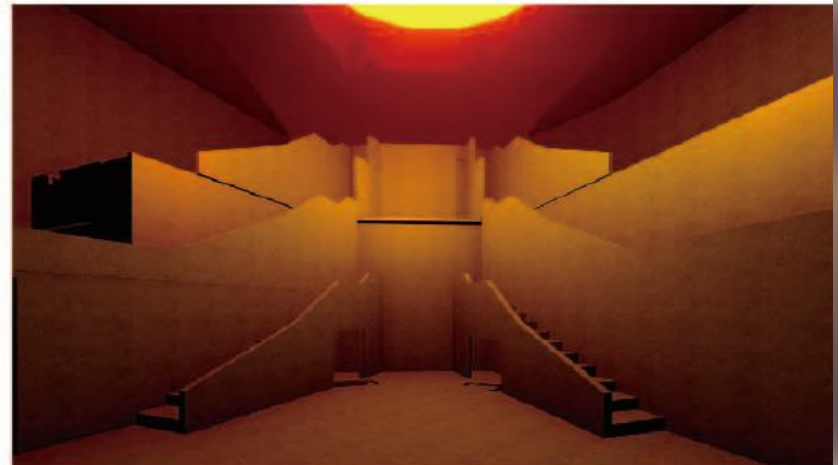
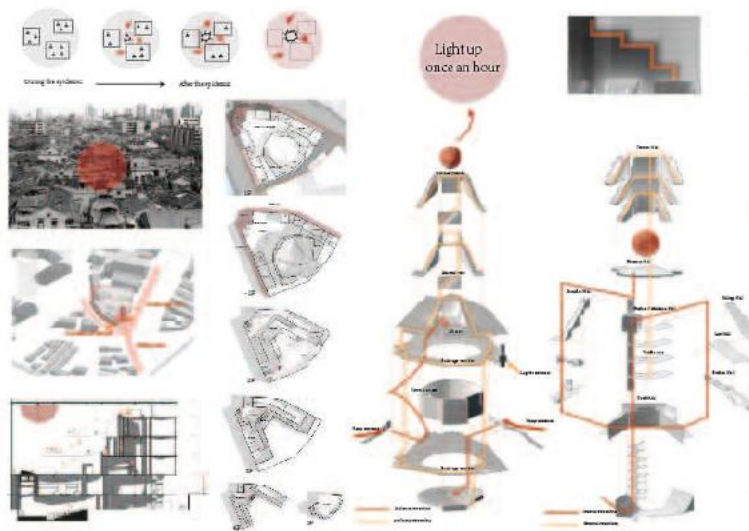
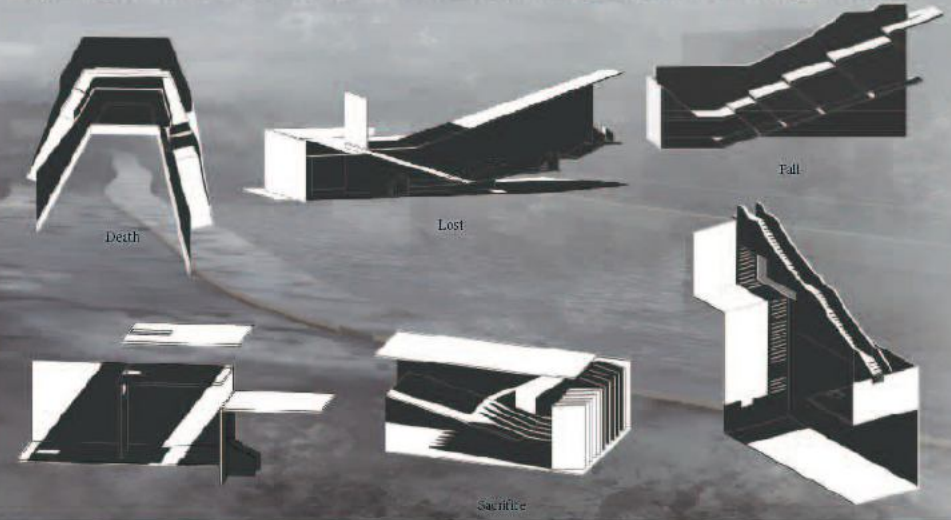
"Compared to focusing on a piece of work, what is more important is whether this exhibition provides you with an opportunity to rethink your relationship with the world. This is the essential purpose of our visit to cultural institutions such as galleries and theaters." — Eliasson.

Under the catalysis of the epidemic, virtual technology has accelerated changes in people's lifestyles. This design is aimed at traditional cultural buildings that have been hit harder by the epidemic. It draws inspiration from Eliasson's works, uses architectural language to present a cultural reflection after the disaster, and reaffirms the social function of the future art museum.

I used the sequence of "falling, lost, broken, death, sacrifice, presence" to design an immersive art experience hall, using the elements of horse head walls and stairs extracted from the old city neighborhood, and people's sense of movement. People experience changes in time and space, as if we are in a world, the sun has died, and we are re-examining ourselves and the world.

The audience here is not the consumer of art, but the equal producer. The public can participate and have a certain impact. The exhibition blends with the drama. There is no absolute stage or auditorium. Here, you are also a work of art, and a performer. You are changing this place. Here, the gallery is not a shelter from the outside world, but a naked reflection of the crisis, a heavy lesson. Let people re-examine the world. In the face of crisis, everyone is equal. We must refuse to be outsiders. Although we are small, we are changing the world.

In this depressed, stagnant residential area, it rests on the river, stranded here like Noah's Ark, reconnecting the north-south cultural axis, waiting for human self-rescue.



RCT21

RIBA | FOREST COMMUNITY

RCT21

Because of the epidemic, the boundary between work and life has become blurred. We hope that through the introduction of nature and landscape design, people can get a more comfortable living space, so as to achieve the purpose of preventing diseases and helping rehabilitation, so that people can feel nature without leaving home.



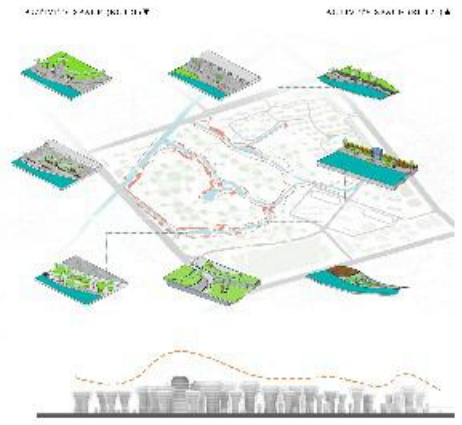
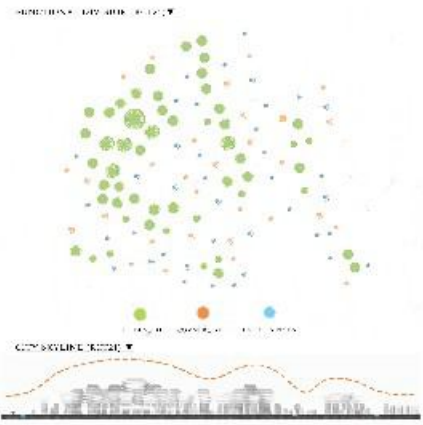
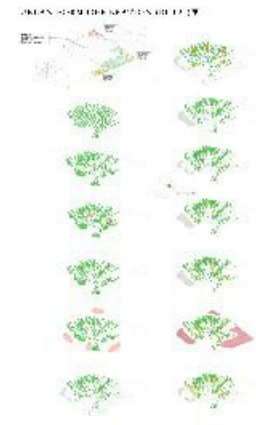
The epidemic has also weakened the relationship between man and nature, and it is difficult to feel nature when quarantined at home. We hope that through the introduction of nature and landscape design, people can get a more comfortable living space, so as to achieve the purpose of preventing diseases and helping rehabilitation, so that people can feel nature without leaving home. The method of introducing nature into the city includes the introduction of water system and the introduction of greening. According to the analysis of the current situation of the base, the water system is used to erode and surround the building mass, allowing green plants to grow from the underground to the roof, forming a green city that interacts with nature. And at the same time increase a variety of urban public spaces to enrich people's daily life.



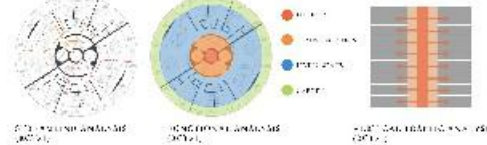
PLAN | PLANNING PLAN



PLAN | PARK DESIGN PLAN



The RIBA Forest Community is a new urban development project that aims to create a sustainable and livable community. The project is located in the heart of the city and is surrounded by existing urban infrastructure. The RIBA Forest Community is a new urban development project that aims to create a sustainable and livable community. The project is located in the heart of the city and is surrounded by existing urban infrastructure.



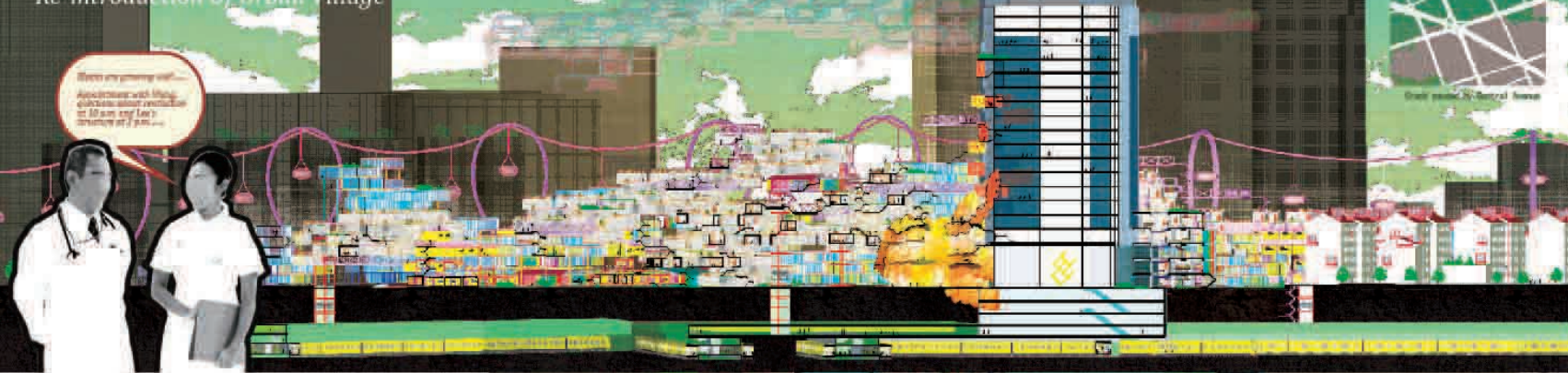
RCT22

URN:RCT22

Healing the City

Urban Mending Experiment In Post-epidemic Era...
Re-introduction Of Urban Village

Where are you going next...
Appointments with Urban Village without restriction to all non-epidemic structure and space...

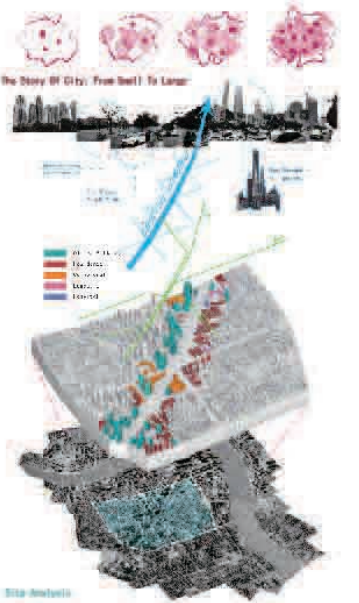
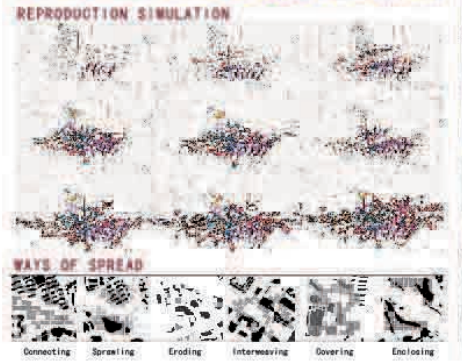


Now that the emptiness of urban space has proved the inadequacy of our city, we need to reflect on its aggressive scale, and the re-engagement of urban village may bring back the exuberant community. This is a city mending experiment, the reinterpretation of intimate scale.

Radical urbanization breaks the urban fabric and the connection between buildings just like corona virus isolates people and damages communication. The skyscraper-based Central Avenue, Shanghai is a typical representative of the ambitious virus of urbanism. The hundred-meter-wide street splits the city, resulting in a lack of communication and unused public space. In the post-epidemic era, it is not only people's health that needs attention, but also the health status of city.

Reproduction is the nature of city, and the natural ability of healing is meant to derive from buildings and citizens, two immune elements. They instantly detected the input of stimulation as the construction started. However, the avenue, also the ruin in the sense of social communication, should have been revitalized by gradual growth of buildings and residents, but the progress was paralyzed due to the restrictions of urban planning. The rule of metabolism should not be ignored to maintain city's health.

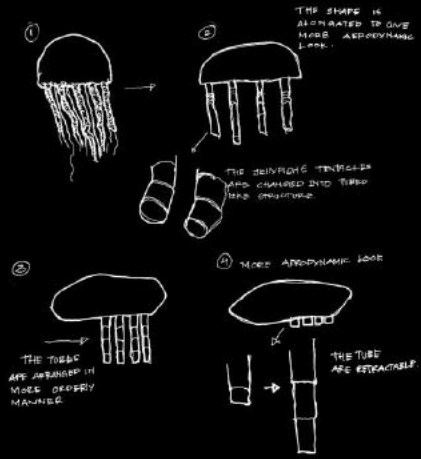
The role of physicians is played by architects, who study, diagnose, prognosticate and treat city issues in order to promote, maintain or restore urban vitality. In this injured site, different units spread from the wound, meet and interweave, forming a bio-like urban landscape with composite functions. These units themselves are considered as living beings, both functionally cooperating and selfishly occupying. In the face of the health crisis of city, citizens have the right to participate in the immunologic process, while managers only play the role as moderator and negotiator, regulating sanitary social distancing between buildings.



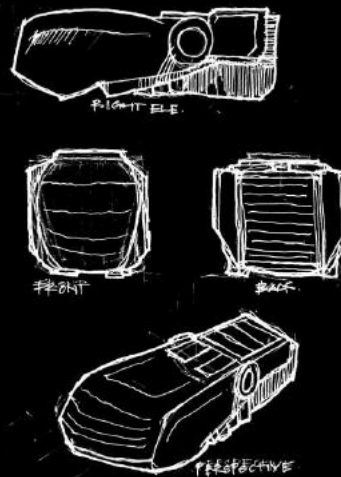
RCT23

ELYSIUM ASSISTANCE

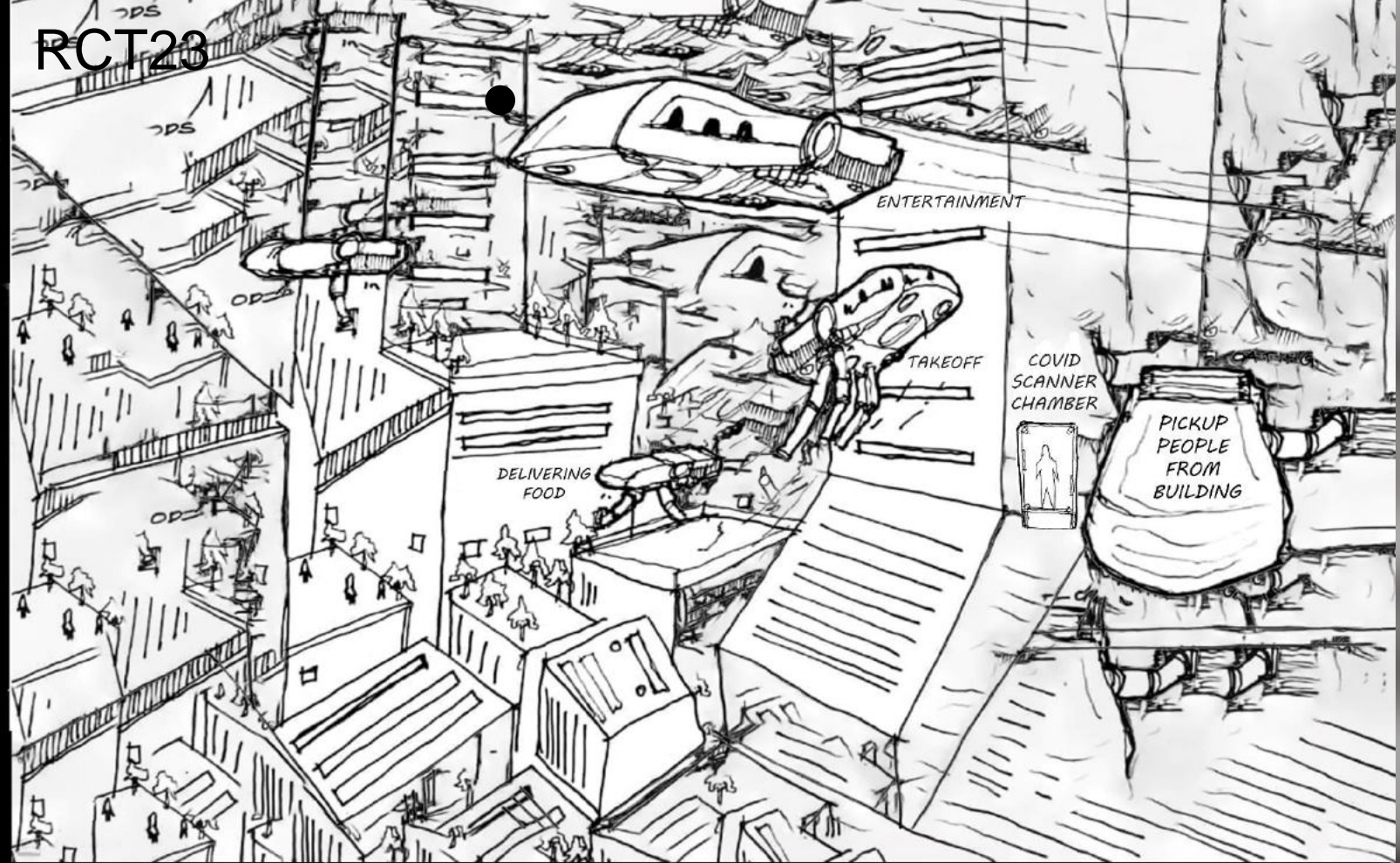
DESIGN PROCESS



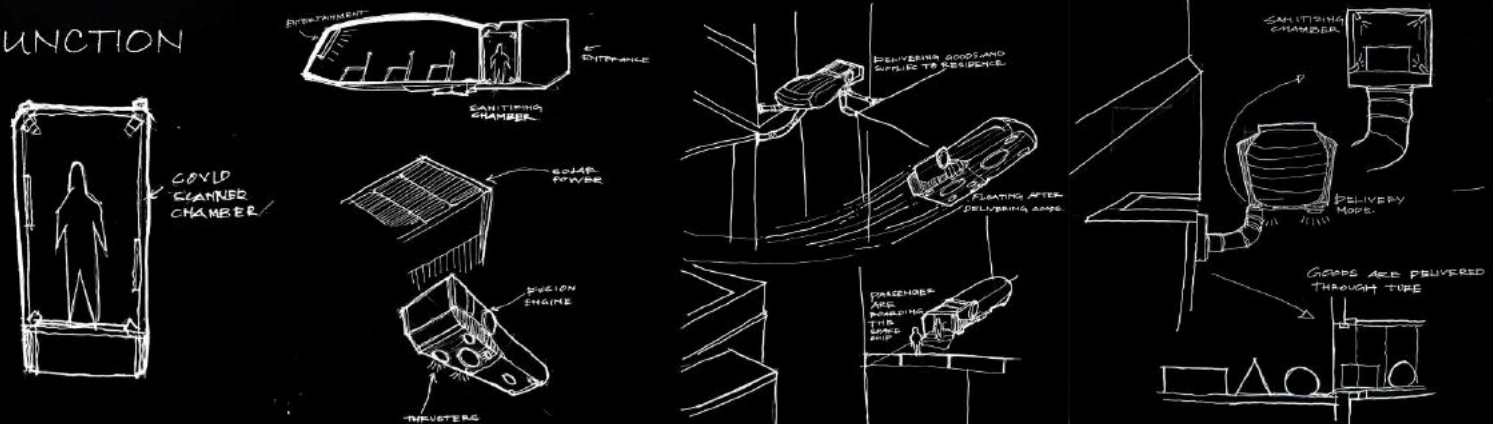
FORM DEVELOPMENT



RCT23



FUNCTION

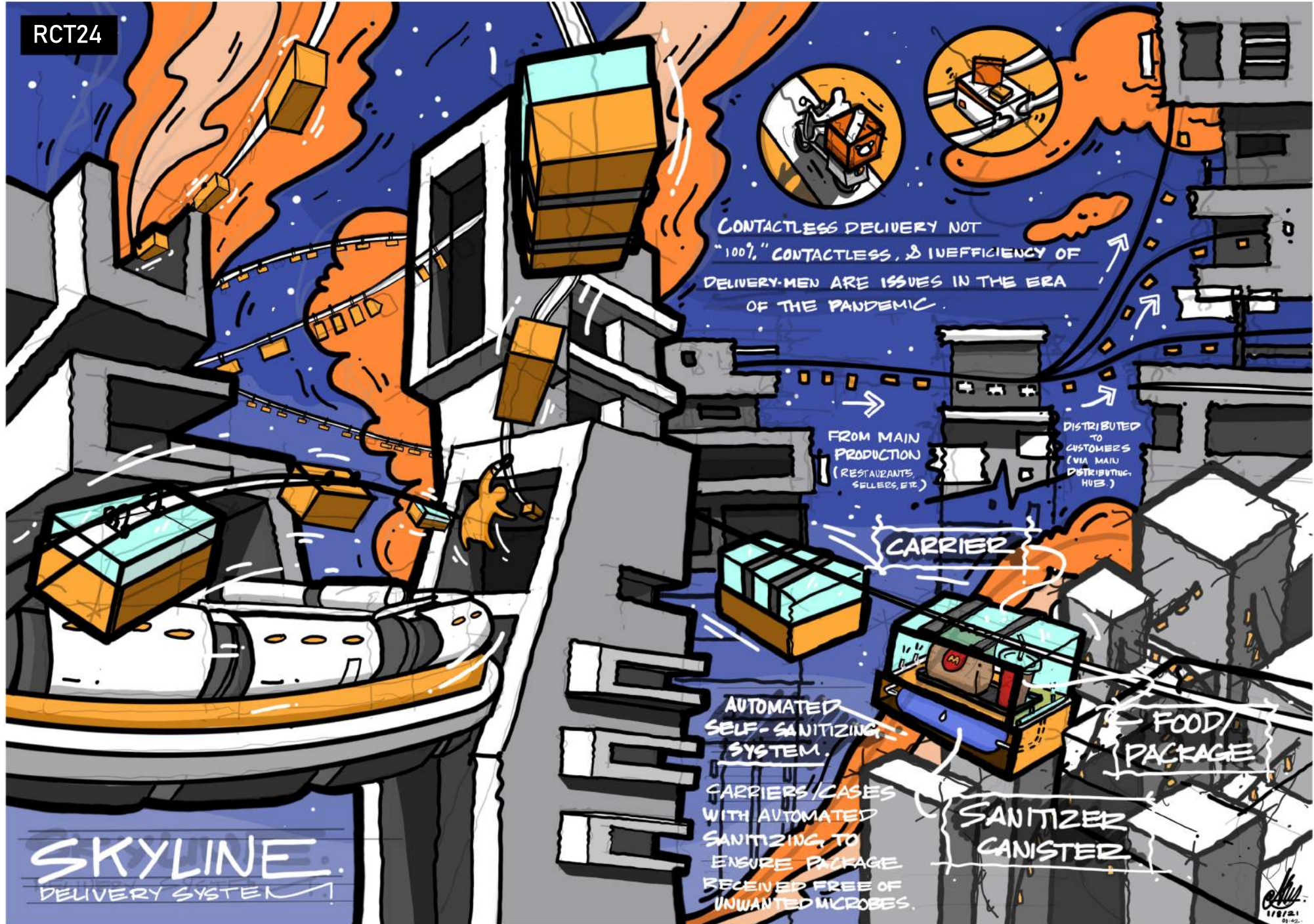


ELYSIUM ASSISTANCE

The future is an era that human beings are eagerly awaiting, and it is unpredictable what may happen in the future. Nowadays, the world has been hit by an epidemic killing many people regardless of race or color. Therefore, the parties involved must be prepared to do something capable of overcoming the same problem as Covid 19 in the future. Nowadays, an issue that often occurs at this time of the pandemic is that the population finds it difficult to get the necessities of life, such as food. It happens because they are forbidden to leave the house so that the virus does not spread. Besides that, the second issue is that residents often experience stress in life because they are forbidden to go out of the house to entertain at home. Therefore, Elysium Assistance is designed to overcome the problem in the future. Elysium assistance inspires by jellyfish because the nature of jellyfish will protect each other when in danger. The function of Elysium Assistance is to be used to deliver food and used as a mobile transport that has movies in it so that users feel enjoyable. In addition, there is a sanitizing chamber at the entrance that is useful to keep users free of Covid 19 when using it or the vehicle is used to deliver convenience goods or necessities. The precautionary measure so that the Covid 19 virus does not spread. Elysium Assistance uses a fusion engine that absorbs sunlight to save flight costs for the vehicle and will not damage the environment in the future.

RCT24

RCT24



CONTACTLESS DELIVERY NOT "100%", CONTACTLESS, & INEFFICIENCY OF DELIVERY-MEN ARE ISSUES IN THE ERA OF THE PANDEMIC.

FROM MAIN PRODUCTION (RESTAURANTS, SELLERS, ETC.)

DISTRIBUTED TO CUSTOMERS (VIA MAIN DISTRIBUTING-HUBS.)

CARRIER

AUTOMATED SELF-SANITIZING SYSTEM.

CARRIERS/CASES WITH AUTOMATED SANITIZING, TO ENSURE PACKAGE RECEIVED FREE OF UNWANTED MICROBES.

FOOD/PACKAGE

SANITIZER CANISTER

SKYLINE DELIVERY SYSTEM

SKYLINE DELIVERY SYSTEM

Inspired by the skyline of the city of Columbia from Bioshock Infinite, the Skyline delivery system is a take on the inspiration in a post-covid era, where the skyline railings soar above-head and connect one destination to another. This in effect enables carriers, which contains packages, food, parcels and goods, to move back and forth via the system. The railings connect firstly from the main production port (restaurants, goods production, etc.) which then go through the automated main distribution hub, which then distribute the carriers carrying the goods to the designated destination. The carriers on the other hand, come equipped with automated self-sanitizing systems which sanitizes the interior of the carriers before and after every trip to ensure no harmful microbes are carried with the contained items. As we approach the future with a more careful and attentive mind towards healthcare, physical contact among us is volatile as we could be the carriers of foreign microbes. Thus, automated carriers delivered through an airborne system that reduce unnecessary physical human contact via delivered goods is essential in shaping a more health-conscious future.

RCT25

DI - VERSE - CITY

WATERLINE TRANSPORTATION SYSTEM

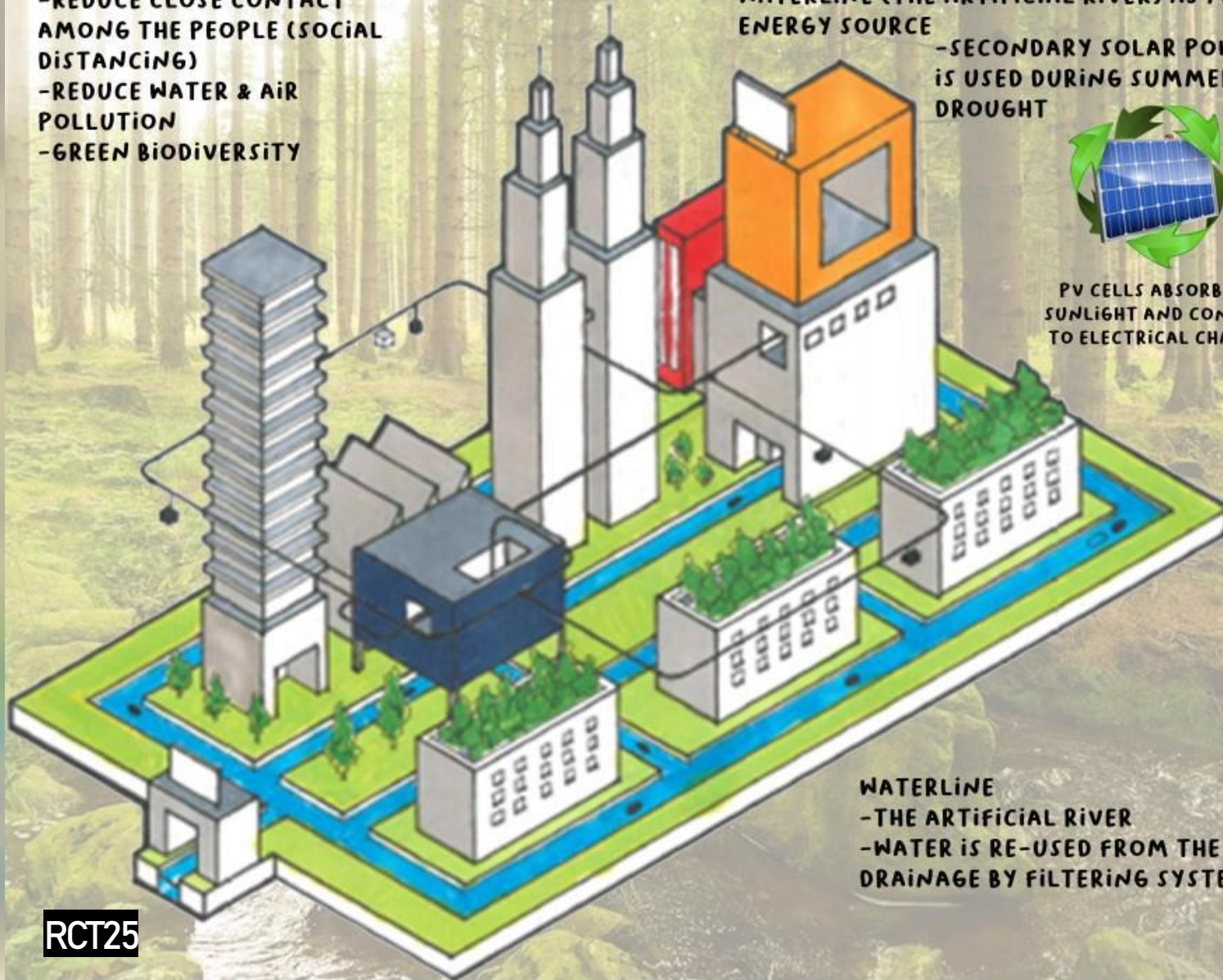
- REDUCE TRAFFIC ACCIDENT
- REDUCE CLOSE CONTACT AMONG THE PEOPLE (SOCIAL DISTANCING)
- REDUCE WATER & AIR POLLUTION
- GREEN BIODIVERSITY

- A SOLAR AND WATERLINE MINIBUS
- CAN FIT 4-5 PERSON AT A TIME
- NOT TOO CROWDED
- TRANSPORTATION FOR WORK
- USE HYDROELECTRIC POWER FROM WATERLINE (THE ARTIFICIAL RIVER) AS MAIN ENERGY SOURCE

- SECONDARY SOLAR POWER IS USED DURING SUMMER / DROUGHT



PV CELLS ABSORB THE SUNLIGHT AND CONVERT TO ELECTRICAL CHARGE.



- WATERLINE
- THE ARTIFICIAL RIVER
- WATER IS RE-USED FROM THE DRAINAGE BY FILTERING SYSTEM



DI-VERSE-CITY

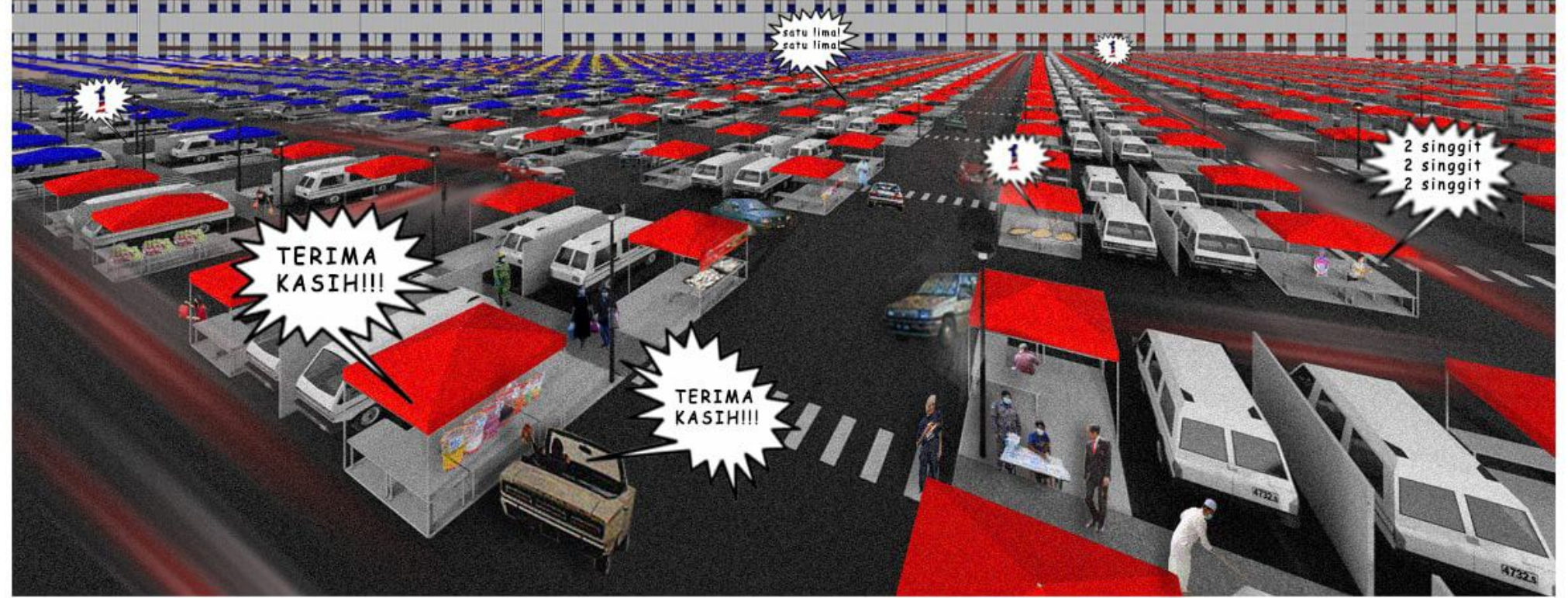
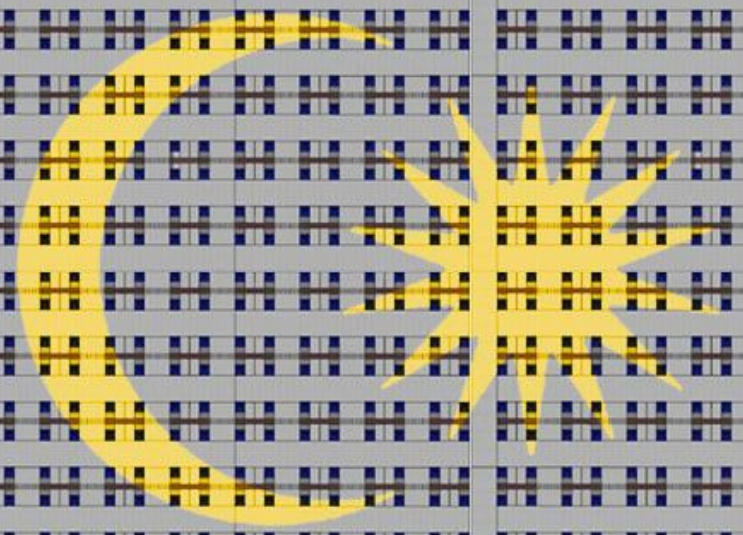
(BIODIVERSITY)

"**DI-VERSE-CITY**" is inspired by freedom and biodiversity, which is one city that gives many advantages to people's health, thus preparing for the pandemic era, which can do a routine before pandemic spread to us. We approach the future by the artificial river as our main concept, which uses two primary renewable energy: solar and water. Both of them can generate electricity. Also, we take Malaysia country as a model with a tropical climate suitable for our case study on that beside case study on the artificial river. We use renewable energy as energy transportation (waterline cable car, solar minibus) and food logistics. It is essential to use renewable energy now because our world lacks unrenowable power like what we use right now. This pandemic era can affect many health care issues, food logistics, entrance in every shop, and source pollution (air, water, etc.). That's why many countries failed in the fight against the pandemic covid -19. Transportation also becomes the main reason the flu can spread (when it's crowded) .meanwhile, a lot of users of engine transportation such as car, bus, motorcycle etc. its may effects to air when many users of vehicles on the road (polluted air).

As we are concerned about health in "di-verse-city", it is about green scenery, therapy mindset to people and soothing sound from the river giving a great impact to the future in many aspects (ecology and humanity). Meanwhile, in terms of transportation in "di-verse-city", we use solar and waterline cable cars and solar minibus to avoid the flu spread when gathering in one bus. Its also can reduce traffic accident which no road used in the city. Thus, Di-verse-city" gives hope for people to face their routine activities without any limit.

RCT27

RCT27



1

satu lima
satu lima

1

1

2 singgit
2 singgit
2 singgit

TERIMA
KASIH!!!

TERIMA
KASIH!!!

47323

47323

“1 Malaysia is our saviour; Circuit is the only hope”

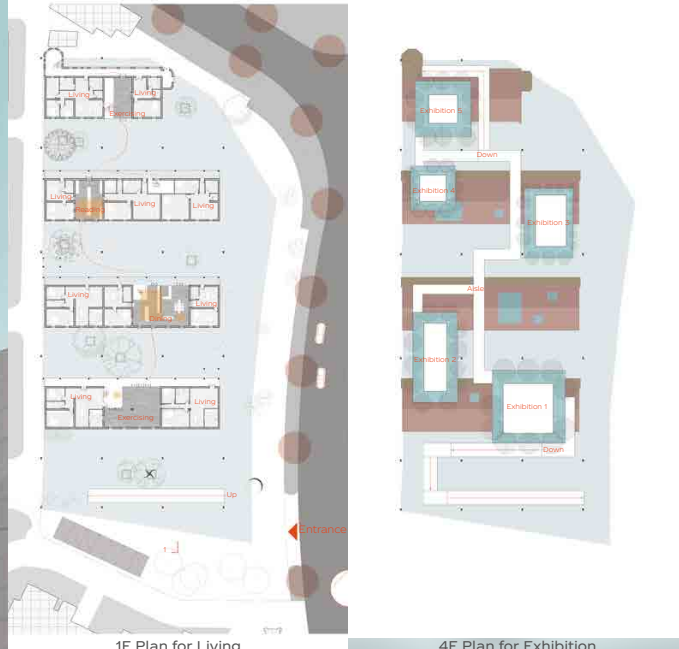
Rather than only depending on the political organization, the phrase "1 Malaysia" is used as a prominent citizens' initiative. A sense of hopelessness has haunted the minds of Malaysians who are struggling and experiencing a prolonged COVID-19 pandemic vis-à-vis other countries, making it difficult for people to survive without jobs. As a result, these people tend to look for the greatest and most efficient means of earning money. We envision that even in the future, during post-COVID, Malaysians will face a long-term necessity for financial and economic recovery. As a result of Malaysians' adaptability and resilience, the idea extends to pop-up markets and drive-thru in Malaysia, which can counteract the issue of massive job losses.

Pop-up market depicts the conceptualization of a complete circuit which entails a constant flow and the pandemic survivors play a vital role as living-machines that are contributing to the mass production of goods resulting from the commencement of this pop-up market. Continuous flow of the controlled grid principle which generated from the connectivity results in a limitless circulation to respond to the chaotic environment due to the pandemic. Interacting while moving are two crucial keys performed in the drive-thru approach that can accomplish the circulation that calls for manoeuvre and reciprocity. The car's secluded space is considered as a boundary that ratifies a person's safe space. By linking similar pieces together in diverse ways, modular architecture allows for additional flexibilities in design and consistent maintenance. The flexible and expandable quality of the pop-up market is promising for more job opportunities to be unlocked chronologically. The red canopy sectionizes foods and beverages while the blue canopy is for perishable foods. In contextual response, the pop-up market aims to be executed in every township in Malaysia focusing on the sub-urban context.

RCT28



URN: RCT28



1F Plan for Living

4F Plan for Exhibition



Section1-1

Reimagining Cities and Towns post-Covid

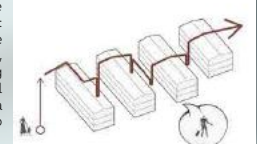
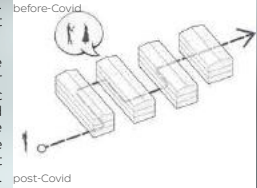
The New Collective: Living, Creating and Exhibiting

Design Instruction

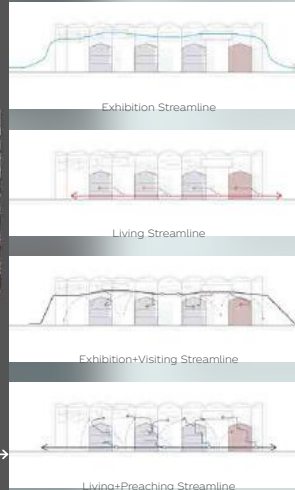
The proposal is aimed at updating the old residential units to the two separated functions of artist living and public exhibiting in the global 'post-epidemic' situation.

Due to the COVID-19, the traditional way of artists' houses upstairs and displaying artworks downstairs is showing its drawbacks. Urban population flow may bring potential infection risk, therefore it is needed to separate living and exhibition.

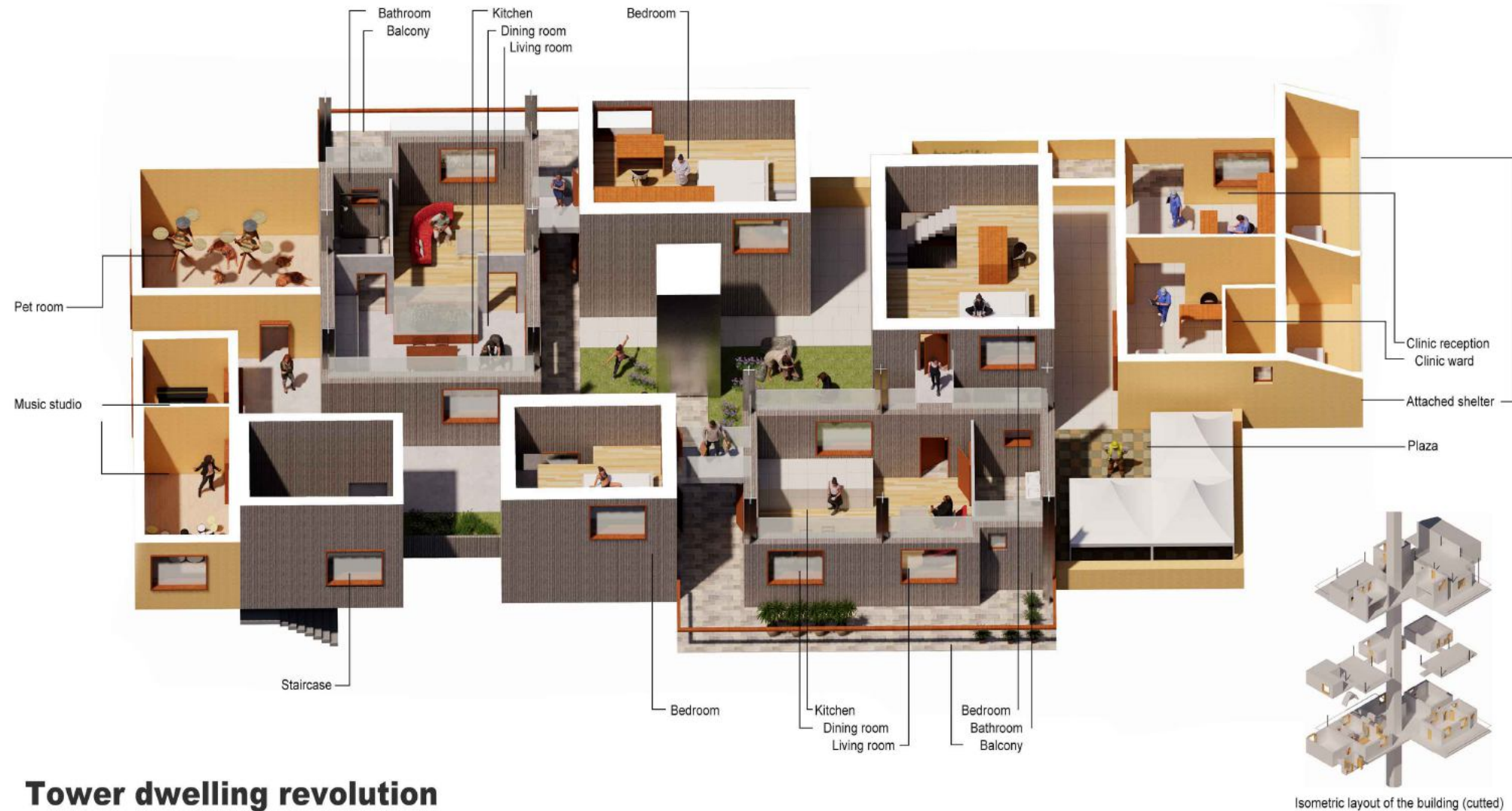
In the proposal, the original congregated house which located in the center of Shanghai will be transformed into a collective house for resident artists and public spaces for exhibitions. Artists domestic and overseas whoever live and work here will be fully immersed in Shanghai's vibrant culture and seek inspiration of the city, while the public will have a safe and unique experience of leisure-time activities against the backdrop of the epidemic. The most important of all, public activities and artists living are relatively isolated. Meanwhile, considering the shortage of land in Shanghai and the need for intensive resources, a **vertical strategy** was adopted: The living space is arranged from the bottom to the top, while the added exhibition space is suspended above the confluence house, which could be accessed both by a public-oriented urban strolling aisle which connects the pavement directly and an intimate vertical staircase inside the house. The exhibition spaces will be served as a venue for the crowd and a special studio for artists when there's no exhibiting.



Site History from 1928 to 2021



RCT29



Tower dwelling revolution

Streets in China's tall tower residential projects

This image shows a typical floor design for tall residential projects. This concept design is to respond to tower dwellings in China or other countries of high population. Post-Covid cities require more consideration on social connection and fundamental facilities. However, in high dense cities, the tower dwellings are hard to achieve these requirements. This image shows a solution to invite streets into the building and attach new facilities or rooms using CLT on the old structure.

The general layout encourages free air flow and providing more exterior space. The street shows a potential to connect to the underground streets or to other buildings. The core of the street is an elevator, the same as the current

Attached facilities

Four kinds of spaces are attached in this design (CLT blocks from left to right), the pet room, the music studio, the clinic and the small plaza. They are allocated in terms of noise level. The clinic is accompanied with two wards, which can be isolated or used as shelters for wanderers. The small plaza is with three tents for activities or for wanderers. Air bridges are designed for better illumination.

Making connection

Two housing types are designed. The importance of kitchen is emphasized in both types. Food and the cooking process can be the indirect connection between neighbours.

The northern (upper) one encourages the family to meet in the balcony. The southern (lower) one pays more attention on privacy and is always ready to isolate. This is also profitable for renting.

Thank you