

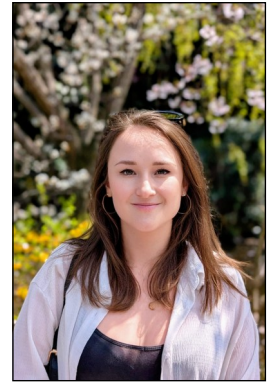
Rebecca Wise

Name and Address of Practice: Hollaway Studio
10a Acton Street, London WC1X 9NG

Position/title: Associate Architect

Qualifications: BArch(Hons) MArch PGDip ARB RIBA

Social Media:



Nominated by: Alexander John Crescens Stuchfield, Mark John Humphreys, Alexander Mark Richards, Kathryn Anne Fisher, Oluwafunmbi Olumoroti Adeagbo, Greta Karolina Jonsson, Richard Hanley Timmins, Mark Williams-Jones

Election Statement

The RIBA has long been a cornerstone of architectural practice in the UK. But as challenges facing our profession grow more urgent—from climate resilience to erosion of labour rights—so too must our institution evolve. As a candidate for RIBA Council, I am committed to championing a profession that is sustainable, accessible, and fair.

A Sustainable Future

The built environment and construction sector accounts for 38% of global carbon emissions. As Architects, we must push for stronger industry-wide standards, ensuring sustainability is not an afterthought but a fundamental design principle. I will advocate for greater support for architects integrating circular economy principles, net-zero methodologies, and regenerative design into their work.

A Profession Open to All

Becoming an architect should not be a privilege reserved for the few. The barriers—whether financial, social, or cultural—must be dismantled. I will push for more affordable routes into the profession, and for routine analysis on who enters, stays, and succeeds in architecture to build real, measurable accessibility.

Fair Work, Fair Pay

Unpaid overtime and poor working conditions have been normalised for too long. RIBA's recent investigation shows 69% of architectural workers under the age of 24 receive less than the Real Living Wage, further exacerbating social inequalities. I will advocate for industry-wide commitments to eradicate exploitative practices to create a healthier, more inclusive work culture.

This is a pivotal moment for our profession. We have a chance—and a responsibility—to shape an architectural future that is ethical, climate-conscious, and truly inclusive. With your support, I'll work to ensure RIBA doesn't just reflect change, but drives it.

Let's build a profession together that reflects the society it serves.