

Densifying Tower Gardens Houses in a Garden

A low-rise, high-density co-operative housing scheme in
Tottenham, London

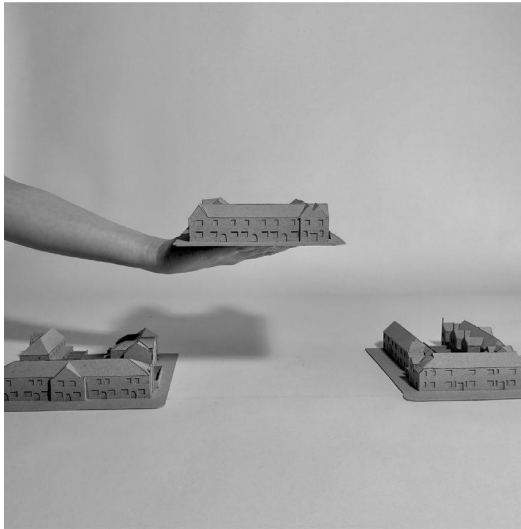


1:10 Model

'A house should be clothed by its garden'
-William Morris¹

¹ National Trust [n.d.] 'The History of Standen | West Sussex', *National Trust* <https://www.nationaltrust.org.uk/visit/sussex/Standen-house-and-garden/the-history-of-standen-house-and-garden> [accessed 30 October 2023]

Documenting the Arts and Crafts



1:250 Group Site Model

Group Research Books

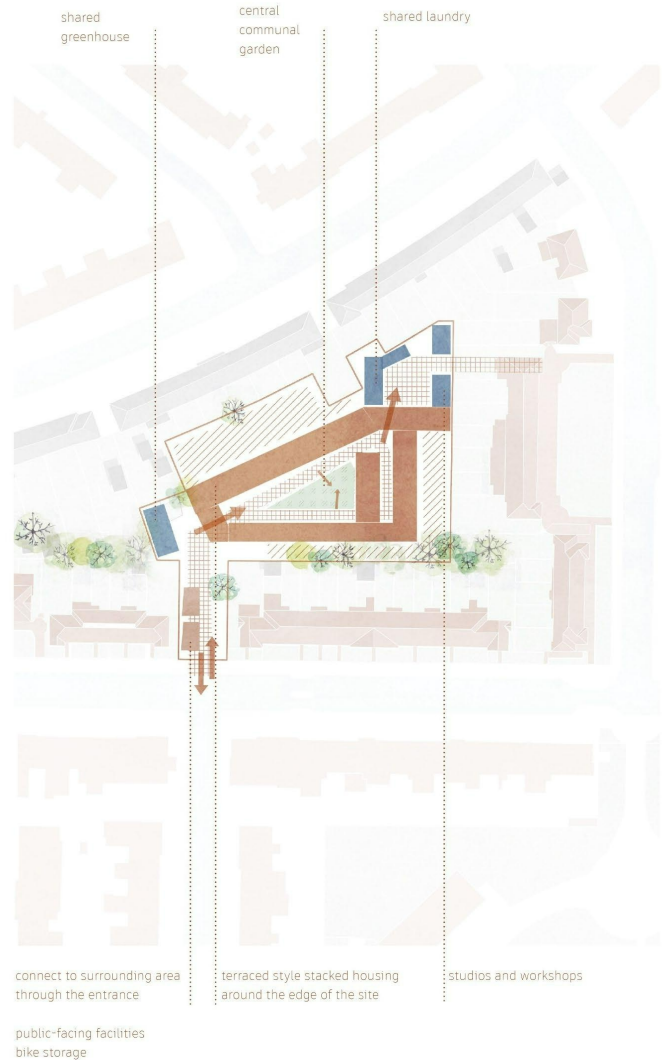


Standen House



Tower Gardens Estate

Developing the Brief



Key Massing Strategy



The brief was developed through drawings of key spaces and quantifiable targets (these were)

- Using an in-fill site to densify the outskirts of London
- A density of 50 to 100 homes per hectare
- a mixture of 1 to 4 bed homes to enhance what was available in the existing urban fabric
- Co-operative housing – communal responsibility for shared spaces and gardens with pooled resources Inspiration taken from the key principle of the Arts and Crafts movement



The site was an unused allotment in the centre of the estate accessed from Risley Avenue

The massing created a perimeter around the site to create courtyards between and maximise density

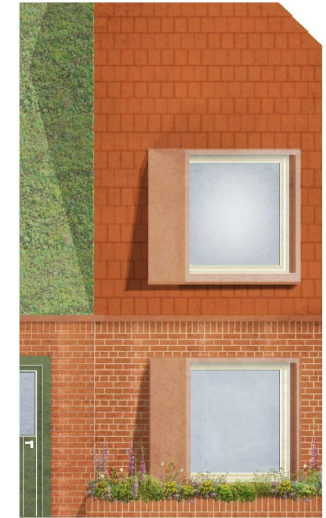
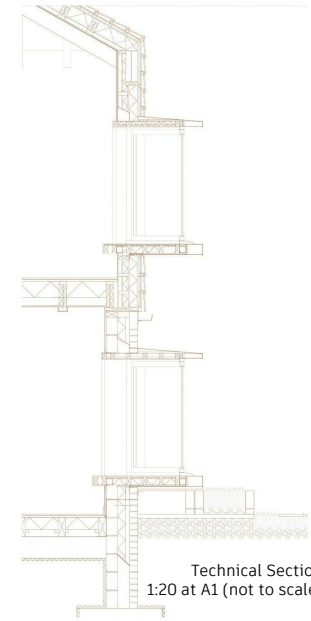


Homes as the Walls of Gardens

The final proposal includes 26 homes with a density of 95 homes per hectare

There is a mixture of 1 to 4 bed homes

1 bed homes – 50%	3 bed homes – 11.5%
2 bed homes – 23%	4 bed homes 15.5%



Technical Development

The Arched Courtyard inspired by traditional Arts and Crafts Gardens





Orchard Entrance from Risley Avenue



Greenhouse Lane

Ground Floor



Key

- 1 Site Entrance, Orchard and Bin Storage
- 2 Lift, Bike and Pram storage
- 3 Potting Shed and Greenhouse
- 4 Kitchen Garden
- 5 Greenhouse
- 6 Laundry
- 7 Studios
- 8 Site Entrance

Housing Types

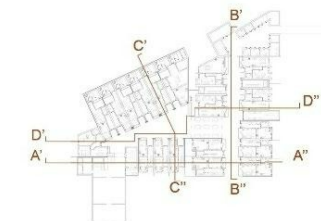
- A 1 Bed 2 People Ground Floor
- C 1 Bed 2 people 2 storeys
- D 2 Bed 4 people 2 storeys
- E 4 Bed 5 people 2 storeys
- G 2 Bed 4 people Ground floor



C'-C'' Section



B'-B'' Elevation

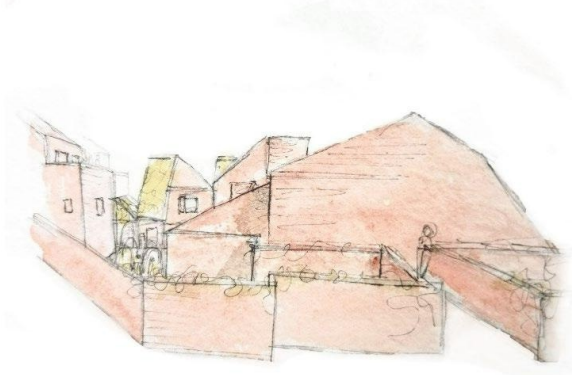


0 1m 5m 10m

1:100 at A1
(not to scale)



Potting Yard



View from the Upper Terrace

First Floor



Key

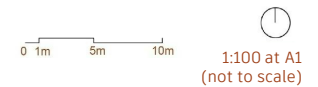
- 1 Steps for an outdoor cinema in the Summer
- 2 Greenhouse and Upper Terrace

Housing Types

- B 3 Bed 4 people 2 storeys
- C 1 Bed 2 people 2 storeys
- D 2 Bed 4 people 2 storeys
- E 4 Bed 5 people 2 storeys



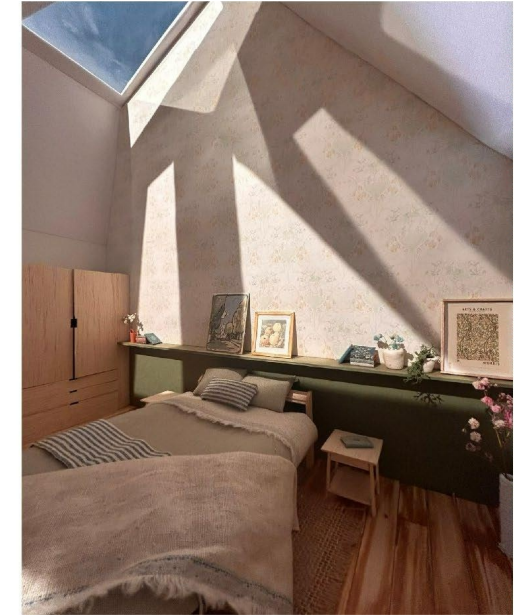
D'-D'' Section



1:100 at A1
(not to scale)



1:10 Model

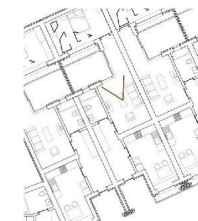


1:10 Model

Inside the Homes

The gardens wrap and inhabit the homes with large windows bridging the threshold between interior and exterior spaces.

The Arts and Crafts inspired wallpaper designed as a primer project celebrates the movement's ideologies allowing the homes to be clothed by its garden both inside and out.



Primer Wallpaper

