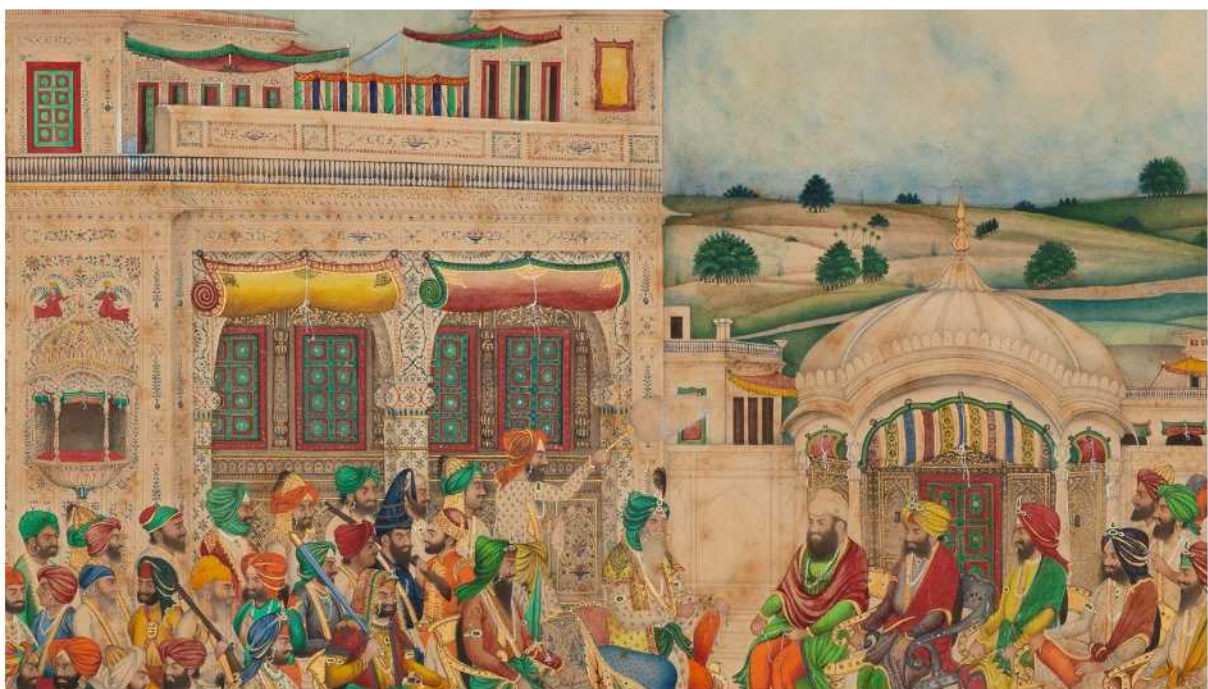


Weekend Masterclass: Drawing Perspectives

Dates	Saturday 18 and Sunday 19 May 2024
Times	10.30-16.30 BST
Location	Saturday at RIBA, 66 Portland Place; Sunday at the Wallace Collection
Tutor	Wilson Yau
Level	All Levels



Bishan Singh (about 1820 to about 1900), The Court of Maharaja Ranjit Singh (r.1799-1839), Amritsar or Lahore, Punjab, 1864 © Toor Collection (detail)

Course Description

Learn how artists in different cultures have represented space and apply these diverse approaches to your own drawing practice. On Saturday, we'll explore the development of linear perspective in Europe through the Royal Institute of British Architect's (RIBA) historical collections and by making creative responses to their iconic headquarters. On Sunday at the Wallace Collection, we'll take inspiration from the miniature watercolour paintings displayed in our new exhibition, *Ranjit Singh: Sikh, Warrior, King*, exploring the multiple perspectives, vivid colours and bold patterning used by northern Indian artists to create a sense of space. Over two days you'll experiment with a range of media including pen, pencil, watercolour and collage to create a varied portfolio of artwork.

A collaboration between the Wallace Collection and the Royal Institute of British Architects (RIBA).

Saturday

On our first day at RIBA, we'll delve into the history of perspective drawing in Europe and look at a selection of rare and important collection objects close up. We'll use the architecture of RIBA's Grade II-listed art deco headquarters to respond to quickfire and more complex drawing challenges, learning how to use single and two-point perspective to create our own architectural pen and pencil drawings.

Sunday

On Sunday at the Wallace Collection, we'll focus on the exquisite miniature paintings in our new exhibition, *Ranjit Singh: Sikh, Warrior, King*, in order to understand how northern Indian artists during the 18th and 19th centuries represented space. We'll focus on flat and multiple perspectives and how to use pattern, shape, colour and line to build composition, developing our artworks in watercolour and collage.

Course Tutor

Wilson Yau is an artist and educator specialising in architectural drawing and history. He has an MA in Design and Art in Education. For over 15 years, he has delivered creative workshops at leading museums and cultural institutions including The Design Museum, Sir John Soane Museum, V&A Museum, Wallace Collection and Watts Gallery. Wilson was formerly Learning Manager at the RIBA and is currently Learning Officer at the Zaha Hadid Foundation.

Previous Skills, Knowledge or Experience

None required. This course is designed as an introduction to the subject.

Equipment and Materials

All materials and equipment are provided.

Joining Information and Format

This masterclass will take place at the RIBA, 66 Portland Place on Saturday, and at the Wallace Collection on Sunday.

On Saturday participants should meet in the RIBA's Clore Learning Centre; on Sunday, participants should meet in the Wallace Collection's Learning Studio, Lower Ground Floor. The masterclass includes access to the exhibition *Ranjit Singh: Sikh, Warrior, King*.
